

VIA DE LA PLATA Section 8



Walk from Puebla de Sanabria to A Gudiña - 53 km

► BOOK NOW!

5 DAYS / 4 NIGHTS



Half Board

hotel en-suite

year round

From €330

This Walking Holiday explores the 8th section of Via de la Plata, the longest of all Camino routes to Santiago de Compostela! It runs through the whole country from South to North, from the hot Andalusian plains to the green mountains of Galicia, from Arabian influenced buildings to traditional stone farmhouses and much more! This Camino in its whole offers most of Spain's rich and mixed culture.

As we veer west, this 8th section on the Via de la Plata route to Santiago de Compostela offers some of the most rewarding views of the whole Camino. This portion of the Way also enters Galicia and runs through beautiful low mountains, making it challenging but offering great views all days long. We have balanced the geographical difficulties by splitting the stages in shorter walks so it is accessible to anybody with an average level of fitness.

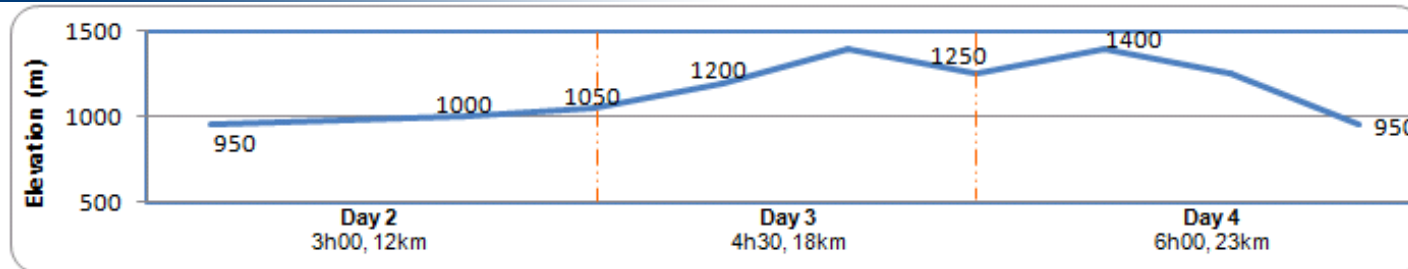
[maps](#)



Via Plata + Por + Puy

Use the navigation tools on the left to zoom-in

Day By day



» Day 1 – Puebla de Sanabria

Perched on top of a hill, the small yet gorgeous old town of Puebla de Sanabria has plenty to offer. With its castle overlooking the town and the valley of Rio Tera and its cobble streets, the village is a nice spot to relax in a peaceful yet full of history location.



Town: ATM, Internet, shops, all facilities

» Day 2 – Puebla de Sanabria to Requejo (12 km, 3h, +150m)

For the first walking day of this section, we start with a short and quiet stroll to Requejo. When leaving Puebla de Sanabria, we cross over Rio Castro. Later on, we start to climb up gradually onto natural paths through pine and oak woods, passing by the Romanesque Iglesia de Santiago de Terroso. Then, there are some great views of the mountains before you reach Requejo. Short transfer to your hotel in Puebla de Sanabria.



Town: ATM, Shops, all facilities
Meals: Breakfast, dinner

» Day 3 - Requejo to Lubian (18 km, 4h30, +350m -150m)

On morning, transfer from hotel back to Requejo. As soon as you leave Requejo, you will feel the appeal of Galicia even though you will only enter it the following day. Indeed, the peace of the countryside and the lovely route through oaks and brackens will undoubtedly bewitch you, even though the rocky and sometimes muddy paths can sometimes make this up and downhill walk a little difficult.



Town: ATM, Shops, all facilities
Meals: Breakfast, dinner

» Day 4 – Lubian to A Gudiña (23km, 6h, +150m -350m)

Soon after leaving Lubian, you will reach the Baroque church of Santuario de la Virgen de la Tuiza. Then, it is a challenging day as the Camino undulates through wood and farm lands with steep up and downs all day long. It also runs through charming villages and offers a beautiful walk before entering A Gudiña.



Town: ATM, Shops, all facilities
Meals: Breakfast, dinner

» Day 5 – A Gudiña

After breakfast, we bid you farewell.



Town: ATM, Internet, shops, all facilities
Meal: Breakfast

how to get there

On this section, it is best to fly in to Madrid to begin the trip, and to fly back home from Santiago de Compostela. However, we also describe how to get from the end of the trip to Madrid. Have a look below for further information!

It is best to fly to Madrid

Virtually every company fly to Madrid

Spanish national company: www.iberia.com

Spanish low-cost: www.spanair.com

To the beginning of the trip: Puebla de Sanabria:

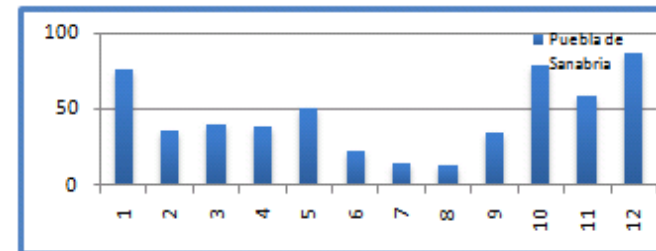
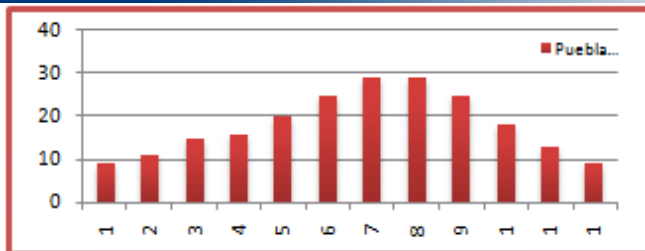
From Madrid airport, take a bus to Madrid bus station (Approx. 20min). Then, bus to Puebla to Sanabria (Approx. 4 hours). 4 buses a day. www.avanzabus.com

Back home

From A Gudiña to Santiago de Compostela: train to Santiago de Compostela (Approx. 1h30). Then take a Freire Bus from the bus station (near the train station) to Santiago airport (approx. 20 min). <http://www.empresafreire.com/html/ingles/seccion3.htm>. Ryanair and Iberia/BA fly direct from Santiago de Compostela to the UK. Ryanair fly to Stansted, Nottingham East Midlands and Liverpool, and AerLingus operates to Dublin. There are also many internal flights from Santiago de Compostela to other spanish cities and other main cities in Europe.

From A Gudiña to Madrid: bus to Madrid bus station (Approx. 5 hours) www.venta.avanzabus.com. Then bus to Madrid airport.

WEATHER



about the walking holiday

hotels

Our accommodation vary from 2* hotels to 3* hotels or equivalent depending on availability. All rooms are en-suite and accommodation is based on character, comfort and location. Our policy is to select the best available hotel in its category at any given time, to make sure your holiday is as valuable as possible. If an accommodation is not available, we may have to find an alternative that is as suitable as possible.

Luggage

We will transport your luggage from one hotel to the next. You only need to carry your backpack during the day!

Included

- Luggage transferred from hotel to hotel
- En-suite Rooms
- Half Board during the hike
- Detailed Walking Notes
- Map
- Pilgrim passport

Not Included

- Flights
- Insurance (recommended)
- Drinks
- Dinners in Ouebla de Sanabria and La Gudiña
- Transfer from/to airport

prices

Period	Price (€)	Single Room (€)	Solo departure (single room included) (€)	Picnic lunches (€)
High Season April, May, June, September	440	103	160	50
Mid Season July, August, October	400	88	144	
Low Season January, February, March, November, December	330	73	144	

OPTIONS

Extra Night in Puebla de Sanabria				Extra Night in A Gudiña (€)				Transport To Puebla de Sanabria from Madrid (€pp) For info on transfers for more passengers or from other airports, please ask us .
2* Hotel B&B (€)		3* Hotel B&B (€)		2* Hotel B&B (€)		3* Hotel B&B (€)		
Single	Double (pps)	Single	Double (pps)	Single	Double (pps)	Single	Double (pps)	
60	44	95	65	60	44	95	65	2-8 people €93pp

*Subject to minimum group requirements.

[Top](#)