

VIA DE LA PLATA Section 6


[▶ BOOK NOW!](#)

Walk from Salamanca to Zamora – 69 km

5 DAYS / 4 NIGHTS



Half Board

hotel en-suite

year round

From €330

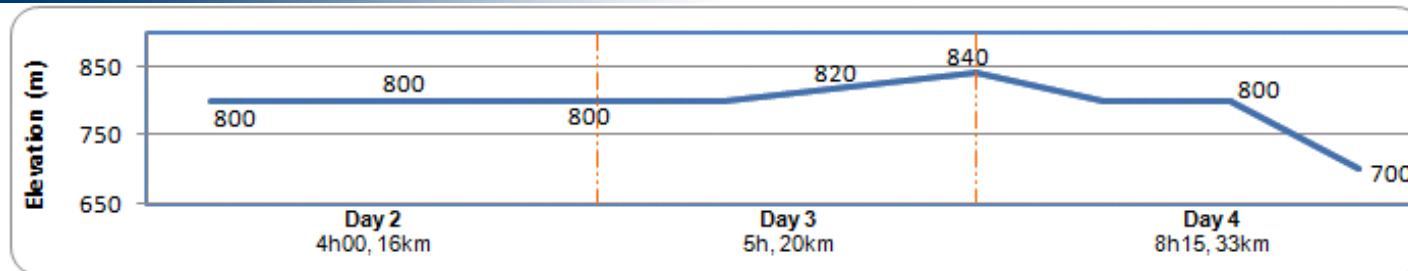
This Walking Holiday explores the 6th section of Via de la Plata, the longest of all Camino routes to Santiago de Compostela! It runs through the whole country from South to North, from the hot Andalusian plains to the green mountains of Galicia, from Arabian influenced buildings to traditional stone farmhouses and much more! This Camino in its whole offers most of Spain's rich and mixed culture.

As we leave Salamanca and its lively buzz, we follow the well-indicated Scallop shells and we soon find ourselves walking across flat cultivated lands and along endless red earth tracks. The last walking day to Zamora is challenging for its length but as the first walking days are of short enough distances, anybody with an average level of fitness can do it. We finish this section in Zamora known as the "little Salamanca" for its architectural heritage.

[maps](#)


Via Plata + Por + Puy

Use the navigation tools on the left to zoom-in

[Day By day](#)


» Day 1 – Salamanca

Many consider Salamanca as one of the most spectacular Renaissance cities in Europe and its old centre was added to the UNESCO World Heritage list in 1988. More than being a favourite destination for both Spanish and foreigners, the city has also a strong student culture. The thirteenth-century university is still in use today and is one of the many touristic spots of the old town.



Town: ATM, Internet, shops, all facilities

» Day 2 – Salamanca to Calzada de Valdeunciel (16 km, 4h)

Leaving Salamanca, we enter what is known as La Meseta, the long stretched high plateau of Central Spain. Shade is almost inexistant today as the Camino runs through flat crop fields split by red earth tracks. We have split it into a short enough stage, so it enables you to walk through the freshness of the first half-day! Short transfer to hotel in Forfoleda.



Town: ATM, Shops, all facilities
Meals: Breakfast, dinner

» Day 3 - Calzada de Valdeunciel to El Cubo del Vino (20km, 5h, + 40m)

Transfer back from hotel to Calzada de Valdeunciel. Today is similar to yesterday's walk: red earth tracks that stretch to the horizon, crop field, and almost no shelter from the sun. This is the perfect type of landscape for peace of mind and quietness, even though the Camino meets up with the main road a few times today. Short transfer to Forfoleda.



Town: ATM, Shops, all facilities
Meals: Breakfast, dinner

» Day 4 – El Cubo del Vino to Zamora (33km, 8h15, - 140m)

Transfer back from hotel to El Cubo del Vino. The first few kilometres after El Cubo del Vino, we are back into the countryside. As the day goes by, vine plots begin to appear around us . As we continue towards Zamora, we will also enjoy great views over the Rio Douro valley. Finally, we arrive in Zamora, a nice city, known as "The Little Salamanca".



Town: ATM, Shops, all facilities
Meals: Breakfast, dinner

» Day 5 – Zamora

After breakfast, we bid you farewell.



Town: ATM, Internet, shops, all facilities
Meal: Breakfast

how to get there

It is best to fly to Valladolid or Madrid

Flying to Valladolid: Ryanair fly from London to Valladolid, 100 kilometres East of Zamora.

www.ryanair.com

Flying to Madrid: Virtually, every company fly to Madrid.

To the beginning of the trip:

From Valladolid to Salamanca: Take a bus from Valladolid Airport to the bus station (Approx. 20 min). Then bus to Zamora (Approx. 1hr), 8 departures a day. www.laregionalvsa.com.

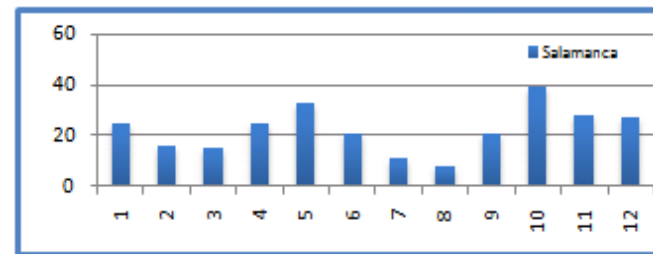
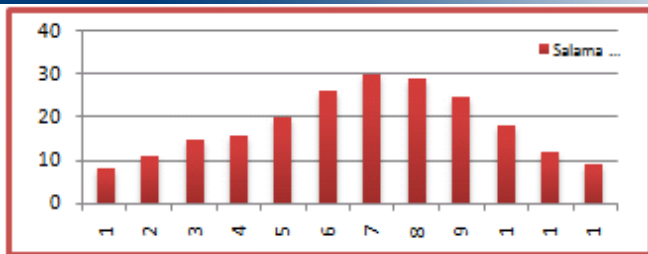
From Madrid to Salamanca: From Madrid airport, take a bus to Madrid bus station (Approx. 20min). Then, bus to Salamanca (Approx. 2h30). Departure every 30 min. www.avanzabus.com

Back home

From Zamora to Valladolid: Bus to Valladolid bus station (Approx. 1h), 8 departures a day. www.laregionalvsa.com. Then bus to Valladolid airport (Approx. 20 min)

From Zamora to Madrid: Bus to Madrid bus station (Approx. 3hrs), 6 departures a day. www.avanzabus.com

WEATHER



about the walking holiday

hotels

Our accommodation vary from 2* hotels to 3* hotels or equivalent depending on availability.

All rooms are en-suite and accommodation is based on character, comfort and location. Our policy is to select the best available hotel in its category at any given time, to make sure your holiday is as valuable as possible. If an accommodation is not available, we may have to find an alternative that is as suitable as possible.

Luggage

We will transport your luggage from one hotel to the next. You only need to carry your backpack during the day!

Included

Not Included

- Luggage transferred from hotel to hotel
- En-suite Rooms
- Half Board during the hike
- Detailed Walking Notes
- Map
- Pilgrim passport
- Flights
- Insurance (recommended)
- Drinks
- Dinners in Salamanca and Zamora
- Transfer from/to airport

prices

Period	Price (€)	Single Room (€)	Solo departure (single room included) (€)	Picnic lunches (€)
High Season April, May, June, September	440	103	160	40
Mid Season July, August, October	400	88	144	
Low Season January, February, March, November, December	330	73	144	

OPTIONS

	Extra Night in Salamanca				Extra Night in Zamora (€)				Transport To Salamanca from Valladolid (€pp) For info on transfers for more passengers or from other airports, please ask us .
	2* Hotel B&B (€)		3* Hotel B&B (€)		2* Hotel B&B (€)		3* Hotel B&B (€)		
	Single	Double (pps)	Single	Double (pps)	Single	Double (pps)	Single	Double (pps)	
	60	44	95	65	60	44	95	65	2-8 people €65pp

*Subject to minimum group requirements.

[Top](#)