

VIA DE LA PLATA Section 5



Walk from Carcaboso to Salamanca - 134 km

[▶ BOOK NOW!](#)

8 DAYS/7 NIGHTS



Half Board

hotel en-suite

year round

From €560

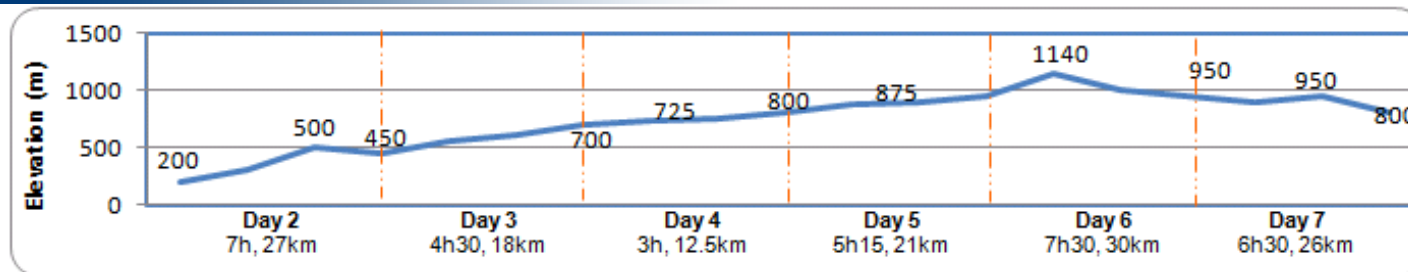
This Walking Holiday explores the 5th section of the Via de la Plata, the longest of all Camino routes to Santiago de Compostela! It runs through the whole country from South to North, from the hot Andalusian plains to the green mountains of Galicia, from Arabian influenced buildings to traditional stone farmhouses and much more! This Camino in its whole offers most of Spain's rich and mixed culture.

We start this section on the very North of the province of Extremadura and soon we enter Castilla y Leon with more mountainous landscapes. Here, the Camino combines all types of landscapes, from exposed open landscapes to woodlands or meadows and grazing cattle, not to forget the Duena Peak (1140m), one of the highest points of this route. We finally arrive in Salamanca, famous for its Renaissance architecture and one of the country's most lively cities. This section is a bit demanding and requires a reasonable level of fitness.

[maps](#)


Via Plata + Por + Puy

Use the navigation tools on the left to zoom-in

[Day By day](#)


» Day 1 – Placencia

Night in Placencia.



Town: ATM, Internet, shops, all facilities

» Day 2 – Placencia to Zara de Granadilla (7h, 27km, +300m -50m)

Transfer to Carcaboso. Carcaboso is a charming town of Extremadura, located near Rio Jerte. It is historically linked to the Via de la Plata as still witness the 2000 years old "Miliarias" (Roman stoneposts) standing near the seventeenth-century Iglesia de Santiago. The first day of this section combines both beautiful countryside and history. When leaving Carcaboso, we follow the Canal del Jerte before starting a long climb up. Then, start to appear witnessing of the Roman times and soon you will walk through the magnificently 2000 years old Arco de Caparra. We spend the night in Zara de Granadilla.



Town: ATM, Shops, all facilities
Meals: Breakfast, dinner

» Day 3 - Zara de Granadilla to Banos de Montemayor (4h30, 18km, +300m -50m)

Soon after we start, the landscape becomes more arid and we begin to see the Sierra de las Candelaria ahead in the distance: we are leaving the Extremadura basin behind us. We spend most of the day walking gently uphill until we reach Banos de Montemayor. After the day spent walking, you can treat yourself with the magical Roman thermal waters of the town!



Town: ATM, Shops, all facilities
Meals: Breakfast, dinner

» Day 5– Calzada de Bejar to Fuenterroble de Salvatierra (5h15, 21km + 200m, -50m)

Today, you will come across more "miliarias" and paved road segments, memories of the ancient Roman times. The landscape still looks arid as we go further into this high tableland but it is easy to find shade from oak trees along the wall-lined tracks. Transfer to hotel in Guijuleo.



Town: ATM, Shops, all facilities
Meals: Breakfast, dinner

» Day 6 – Fuenterroble de Salvatierra to San Pedro de Rozados (7h30, 30km, +m -m)

Transfer from hotel back to Fuenterroble de Salvatierra. We continue our way through the high plateau and find ourselves walking most of the day on nice tracks through the country. The main difficulty of the day is when climbing up the Duena Peak (1140m) but as usual, it worth it as there are good views of the Meseta from the top. Then we walk down through oak woods and farmlands to reach San Pedro de Rozados.



Town: ATM, Internet, shops, all facilities
Meals: Breakfast, dinner

» Day 7 – San Pedro de Rozados to Salamanca (6h30, 26km, +50m, -200m)

The last day of this section offers little shade but the open landscapes and nice view over the country will surely distract you to enjoy this final walking day. Finally, we reach Salamanca, a wonderful lively city, full of history.

» **Day 4 – Banos de Montemayor to Calzada de Bejar (3h, 12.5km, + 100 m)**

Leaving Banos de Montemayor, we start with a steep climb up at the top of which we can enjoy beautiful views of Banos de Montemayor. Further on, we go downhill on a well preserved stretch of the Roman road, lined with chestnut, beech, and oak trees. The last leg to Calzada de Bejar is uphill, offering open views to the beautiful valley of Rio Cuerpo.



Town: ATM, Shops, all facilities
Meals: Breakfast, dinner



Town: ATM, Internet, shops, all facilities
Meals: Breakfast, dinner

» **Day 8 – Salamanca**

After breakfast, we bid you farewell.



Town: ATM, Internet, shops, all facilities
Meals: Breakfast

how to get there

It is best to fly to Madrid

Virtually, every company fly to Madrid

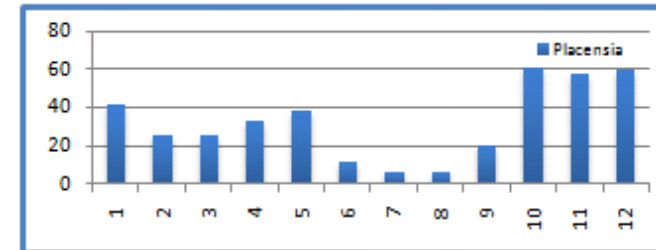
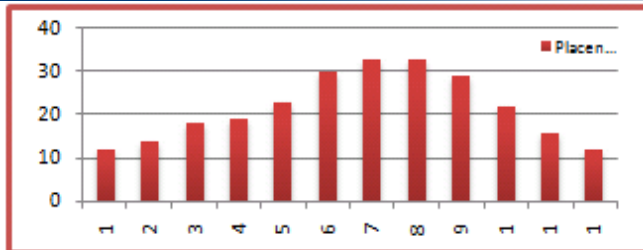
To the beginning of the trip: Plasencia

From Madrid airport, bus to Autobus de Sur bus station. Then Cevesa bus to Plasencia (Approx. 3hrs), 2-3 departures a day. www.cevesa.com

Back home

From Salamanca bus station, bus to Madrid bus station (Approx. 2h30). Departure every 30 min. www.avanzabus.com. Then bus to Madrid airport (Approx. 20min).

WEATHER



about the walking holiday

hotels

Our accommodation vary from 2* hotels to 3* hotels or equivalent depending on availability. All rooms are en-suite and accommodation is based on character, comfort and location. Our policy is to select the best available hotel in its category at any given time, to make sure your holiday is as valuable as possible. If an accommodation is not available, we may have to find an alternative that is as suitable as possible.

Luggage

We will transport your luggage from one hotel to the next. You only need to carry your backpack during the day!

Included

- Luggage transferred from hotel to hotel
- En-suite Rooms
- Half Board during the hike
- Detailed Walking Notes
- Map
- Pilgrim passport

Not Included

- Flights
- Insurance (recommended)
- Drinks
- Dinners in Placencia and Salamanca
- Transfer from/to airport

prices

Period	Price (€)	Single Room (€)	Solo departure (single room included) (€)	Picnic lunches (€)
High Season April, May, June, September	750	159	280	60
Mid Season July, August, October	680	136	252	
Low Season January, February, March, November, December	560	113	252	

OPTIONS

		Extra Night in Placencia		Extra Night in Salamanca (€)				Transport To Placencia from Madrid (€pp)	
		2* Hotel B&B (€)		3* Hotel B&B (€)		2* Hotel B&B (€)		3* Hotel B&B (€)	
		Single	Double (pps)	Single	Double (pps)	Single	Double (pps)	Single	Double (pps)
		60	44	95	65	60	44	95	65
		For info on transfers for more passengers or from other airports, please ask us.							
		2-8 people €125pp							

*Subject to minimum group requirements.

[Top](#)