

## VIA DE LA PLATA Section 3


[▶ BOOK NOW!](#)

### Walk from Merida to Caceres - 78 km

6 DAYS/5 NIGHTS



Half Board

hotel en-suite

year round

From €410

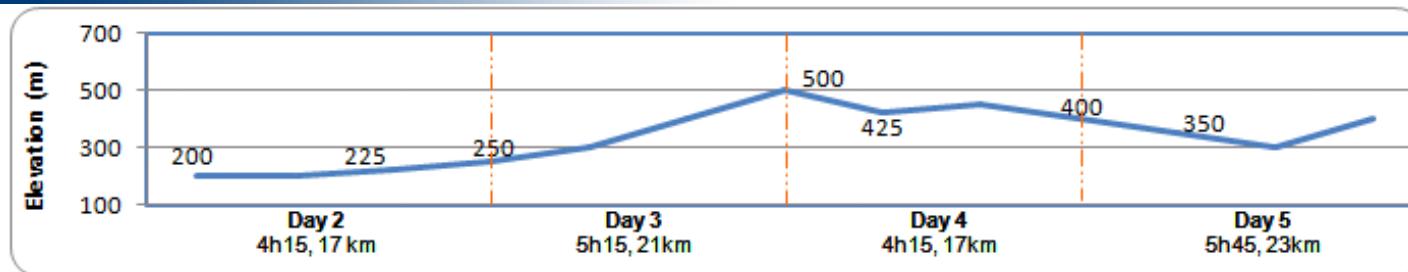
This Walking Holiday explores the 3rd section of the Via de la Plata, the longest of all Camino routes to Santiago de Compostela! It runs through the whole country from South to North, from the hot Andalusian plains to the green mountains of Galicia, from Arabian influenced buildings to traditional stone farmhouses and much more! This Camino in its whole offers most of Spain's rich and mixed culture.

On this section, the Camino heads North, through the Extremadura Province, a land of dry and gently hilly landscapes that sometimes seems to be more inhabited by cerdos ibericos (dark brown pigs typical of the region) than by people. Indeed, there can be long enough gaps between villages, giving you time to enjoy open landscapes of crop fields and vines, corkwoods and wild flowers all year round. We know the long stretches with little shade can make the Via de la Plate route challenging, so we have split most stages into short enough walking days so anybody with an average level of fitness can make it to Caceres.


[maps](#)

#### Via Plata + Por + Puy

Use the navigation tools on the left to zoom-in

[Day By day](#)


### » Day 1 – Merida

Merida was founded in 250 BC and the Roman inheritance is still well visible at every corner of the city nowadays. More than a UNESCO World Heritage site, this human-size city has plenty to offer, and tourists always enjoy its lively buzz, hopping from tapas bars to wonderful restaurants.



**Town:** ATM, Shops, all facilities

### » Day 2 – Merida to Aljucen (17km, 4h15, +50m)

Leave Merida crossing the river via a Roman bridge (over 2000 years old), from which there are beautiful views of the impressive Roman Acueduct. Then, we head towards the Prosperina dam which once was the biggest water reservoir in the Mediterranean Roman empire. The red-earth landscape becomes hillier and there are also more oak trees to provide you with shelter from the sun. After a short day walking, we reach Aljucen from where we will be transferred back to our hotel in Merida.



**Town:** ATM, Shops, all facilities  
**Meals:** Breakfast, dinner

### » Day 3 - Aljucen to Alcuéscar (21km, 5h15, +250m)

Transfer back to Aljucen. Shortly after Aljucen, we enter the National Park of Cornalvo, a landscape of scrubland, red earth tracks, pasture and oak trees. Then, the farmlands alternate between cork trees, vines, olive trees and livestock until you reach the first and last village of the day: Alcuéscar.



**Town:** ATM, Shops, all facilities  
**Meals:** Breakfast, dinner

### » Day 4 – Alcuéscar to Aldea del Cano (17km, 4h15, +25m, -125m)

From Alcuéscar, it is first an easy and peaceful walk to Las Casas de Don Antonio and its well-restored Roman bridge. Later, we walk on the original Roman road as we pass by what is known as miliario (Roman milestone) and cross one more Roman bridge before reaching Aldea del Cano.



**Town:** ATM, Shops, all facilities  
**Meals:** Breakfast, dinner

### » Day 5 – Aldea del Cano to Cáceres (23km, 5h45, +100m -100m)

On this last day, we leave Aldea del Cano and continue through the flat and dry lands of Extremadura. We later cross a long Roman arched bridge at the entrance of Valdesalor. It is then a hilly landscape with little and scattered shade all the way to Cáceres and its old town, perched on top of a hill.



**Town:** ATM, Shops, all facilities  
**Accommodation:** En-suite. 2\* accommodation or equivalent.  
**Meals:** Breakfast, dinner

### » Day 6 - Cáceres

After breakfast, we bid you farewell.



**Town:** ATM, Shops, all facilities  
**Meals:** Breakfast, dinner

## how to get there

It is best to fly to Sevilla as it then shortens they journey to Merida. It is also possible to fly to Madrid.

### To Seville\_

[Aer Lingus](#), [Iberia](#), [Vueling](#) and [Ryanair](#) fly to Sevilla, amongst other companies. Ryanair fly from Dublin, London, Liverpool and Bristol. Iberia also fly from Dublin and the UK. [www.sevilla-airport.com/en/airport\\_info.php](http://www.sevilla-airport.com/en/airport_info.php)

### To Madrid

Virtually, every company fly to Madrid

### To the beginning of the trip:

From **Seville Airport**, bus to Seville bus station (Approx. 25min). Then, bus to Merida (Approx. 2h30), 7 departures a day [www.leda.es](http://www.leda.es)

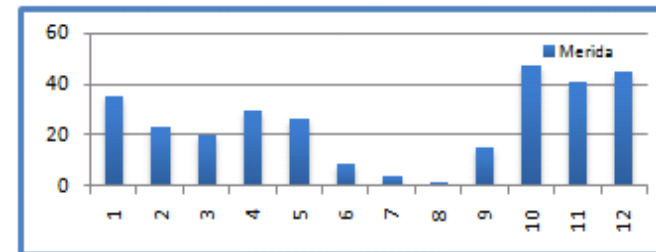
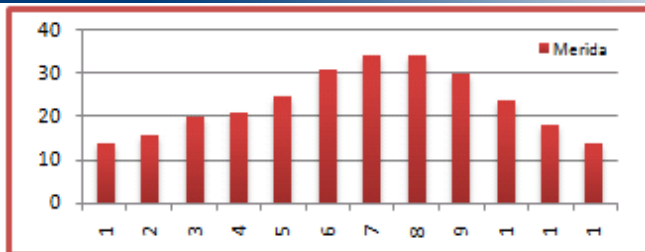
From **Madrid Airport**, bus to Madrid bus station (Approx. 20min). Then bus to Merida (Approx. 4h30), 7 departures a day. [www.avanzabus.com](http://www.avanzabus.com)

### Back home

From Caceres, bus to **Madrid**, 7 departures a day (Approx. 4hours), [www.avanzabus.com](http://www.avanzabus.com)

From Caceres, bus to **Sevilla**, 7 departures a day (Approx. 4hours). [www.alsa.es](http://www.alsa.es)

## WEATHER



## about the walking holiday

### hotels

Our accommodation vary from 2\* hotels to 3\* hotels or equivalent depending on availability. All rooms are en-suite and accommodation is based on character, comfort and location. Our policy is to select the best available hotel in its category at any given time, to make sure your holiday is as valuable as possible. If an accommodation is not available, we may have to find an alternative that is as suitable as possible.

### Luggage

We will transport your luggage from one hotel to the next. You only need to carry your backpack during the day!

## Included

- Luggage transferred from hotel to hotel
- En-suite Rooms
- Half Board during the hike
- Detailed Walking Notes
- Map
- Pilgrim passport

## Not Included

- Flights
- Insurance (recommended)
- Drinks
- Dinners in Merida and Caceres
- Transfer from/to airport

## prices

Period	Price (€)	Single Room (€)	Solo departure (single room included) (€)	Picnic lunches (€)
<b>High Season</b> April, May, June, September	550	121	200	40
<b>Mid Season</b> July, August, October	490	104	180	
<b>Low Season</b> January, February, March, November, December	410	86	180	

## OPTIONS

Extra Night in Merida				Extra Night in Caceres (€)				Transport to Merida from Seville (€pp)
2* Hotel B&B (€)		3* Hotel B&B (€)		2* Hotel B&B (€)		3* Hotel B&B (€)		For info on transfers for more passengers or from other airports, please <a href="#">ask us</a> .
Single	Double (pps)	Single	Double (pps)	Single	Double (pps)	Single	Double (pps)	
60	44	95	65	60	44	95	65	

\*Subject to minimum group requirements.

[Top](#)