

VIA DE LA PLATA Section 2


[▶ BOOK NOW!](#)

Walk from Monesterio to Merida – 112 km

7 Days/6 Nights



Half Board

hotel en-suite

year round

From €490

This Walking Holiday explores the 2nd section of Via de la Plata, the longest of all Camino routes to Santiago de Compostela! It runs through the whole country from South to North, from the hot Andalusian plains to the green mountains of Galicia, from Arabian influenced buildings to traditional stone farmhouses and much more! This Camino in its whole offers most of Spain's rich and mixed culture.

From Monesterio, the Camino stretches through the South of Extremadura, a region of dry and sparsely populated farmlands. Walking through dry lands with little shade can be seen as challenging but we have split most stages in short enough days and the geography of the flat ground presents no particular difficulty so it only requires an average level of fitness. Olive tree orchards, vine plots and wild flowers add patches of colours to the dominated red earth landscape. Roman influence is still predominant in the area as you will notice, either with the many bridges crossed along the days, either in cities such as Zafra or Merida where there is plenty to see and enjoy!

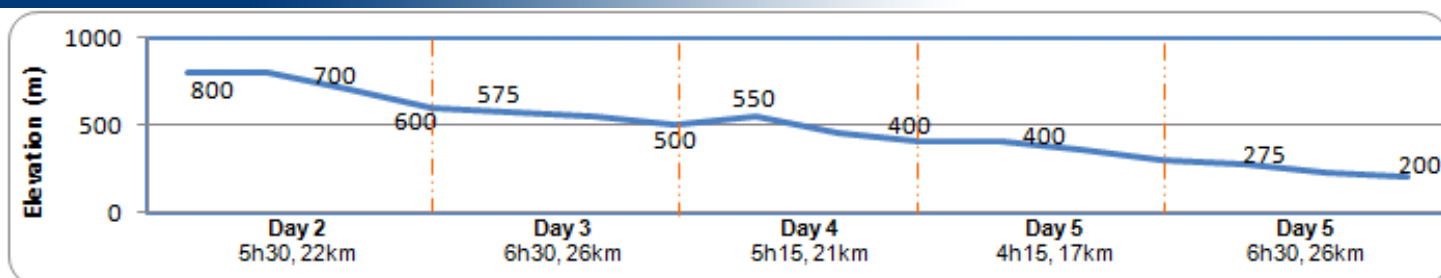

[maps](#)

<

Via Plata + Por + Puy

Use the navigation tools on the left to zoom-in

Day By day



» Day 1 – Monesterio

Monesterio is strongly linked to the history of the Camino de Santiago when Templars from the Order of Santiago brought wealth to the town back in the fifteenth and sixteenth centuries. Nowadays, few remains witness of this heritage and Monesterio is a quiet Extremadura town.

» Day 5 – Villafranca de los Barros to Almendralejo (4h15, 17km, -100m)

Leaving Villafranca de los Barros, we find ourselves surrounded mainly by vines as the area produces a well-known wine. The flat ground and short distance to Almendralejo makes today an easy and nice stroll through the countryside.



Town: ATM, Internet, shops, all facilities



Town: ATM, Shops, all facilities
Meals: Breakfast, dinner

» **Day 2 – Monesterio to Fuente de Cantos (5h30, 22km, +100m -300 m)**

Today the Camino can be quite exposed, walking on long undulated tracks, even though scatered oak holms and fig groves provide you with shelter from the sun here and there. Few kilometres after Monesterio, don't miss the 5000 years old megalithic, 10 metres off the track. Gazing pigs will probably be the only inhabitants you will see along the way, as the Camino here doesn't pass through any village before reaching Fuente de Cantos, a pretty village.



Town: ATM, shops, all facilities.
Meals: Breakfast, dinner

» **Day 6 - Almendralejo to Merida (6h30, 26km, -100m)**

After Almendralejo, we start to see mountains in the distance to our right and the crops also diversify as sunflower and cereal field alternate with vines and olive tree orchards. Toremegia is the only town we pass through before continuing through the countryside before getting back to civilisation when approaching Merida and its rich historical heritage.



Town: ATM, Shops, all facilities
Meals: Breakfast, dinner

» **Day 3 - Fuente de Cantos to Zafra (6h30, 26km, +100m -200m)**

When leaving Fuente de Cantos, we follow an ancient Roman route and we start to see the first vines of this section, a sign of changing soil. Few kilometres further on, we pass through Calzadilla de los Barros. Then, it is an isolated and peaceful stroll along undulated dirt tracks, bordered by vine plots and olive tree orchards. The walking day ends up in Zafra, a charming old town.



Town: ATM, Shops, all facilities
Accommodation: En-suite. 2* accommodation or equivalent.
Meals: Breakfast, dinner

» **Day 7 – Merida**

After breakfast, we bid you farewell.



Town: ATM, Internet, shops, all facilities
Meal: Breakfast

» **Day 4 – Zafra to Villafranca de los Barros (5h15, 21km, +100m -200m)**

The first few kilometres after Zafra gently climb up before zigzaging down to the whitewashed town of Los Santos de Maimona. Then, it is an enjoyable up and down walk through farmlands, vines and olive trees with nice views over the surrounding countryside.

Town: ATM, Shops, all facilities

Meals: Breakfast, dinner

how to get there

It is best to fly to Seville_

[Aer Lingus](#), [Iberia](#), [Vueling](#) and [Ryanair](#) fly to Sevilla, amongst other companies. Ryanair fly from Dublin, London, Liverpool and Bristol. Iberia also fly from Dublin and the UK. www.sevilla-airport.com/en/airport_info.php

To the beginning of the trip: Monesterio

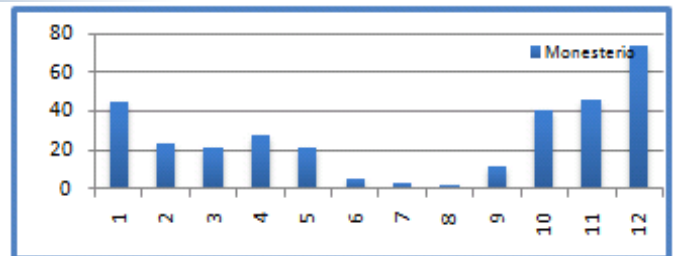
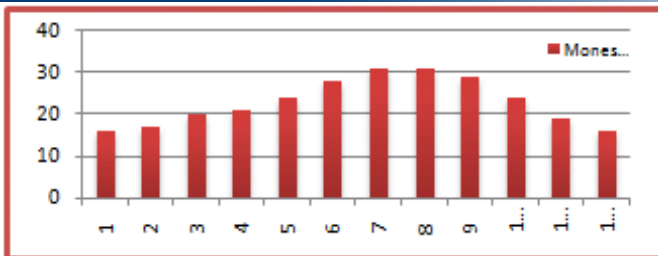
From Seville Airport, bus to Seville bus station (Approx. 25min). Then bus to Monesterio (Approx. 1hr), 9 departures a day. www.leda.es

Back home

From Merida, bus to Seville (Approx. 2h30), 7 departures a day. www.alsa.es

It is also possible to get a bus to Madrid (Approx. 4h30) if you fly back home from there. www.avanzabus.com

WEATHER



about the walking holiday

hotels

Our accommodation vary from 2* hotels to 3* hotels or equivalent depending on availability. All rooms are en-suite and accommodation is based on character, comfort and location. Our policy is to select the best available hotel in its category at any given time, to make sure your holiday is as valuable as possible. If an accommodation is not available, we may have to find an alternative that is as suitable as possible.

Luggage

We will transport your luggage from one hotel to the next. You only need to carry your backpack during the day!

Included

- Luggage transferred from hotel to hotel
- En-suite rooms
- Half Board during the hike
- Detailed Walking Notes
- Map
- Pilgrim passport

Not Included

- Flights
- Insurance (recommended)
- Drinks
- Dinners in Monesterio and Merida
- Transfer from/to airport

prices

Period	Price (€)	Single Room (€)	Solo departure (single room included) (€)	Picnic lunches (€)
High Season April, May, June, September	650	140	240	50
Mid Season July, August, October	580	120	220	
Low Season January, February, March, November, December	490	100	220	

OPTIONS

Extra Night in Monesterio				Extra Night in Merida (€)				Transport To Monasterio from Seville(€pp) For info on transfers for more passengers or from other airports, please ask us .
2* Hotel B&B (€)		3* Hotel B&B (€)		2* Hotel B&B (€)		3* Hotel B&B (€)		
Single	Double (pps)	Single	Double (pps)	Single	Double (pps)	Single	Double (pps)	
60	44	95	65	60	44	95	65	2-8 people €50pp

*Subject to minimum group requirements.

[Top](#)