

## VIA DE LA PLATA Section 10



### Walk from Ourense to Santiago de Compostela - 110 km

[▶ BOOK NOW!](#)

7 DAYS/6 NIGHTS



Half Board

hotel en-suite

YEAR Round

From €490

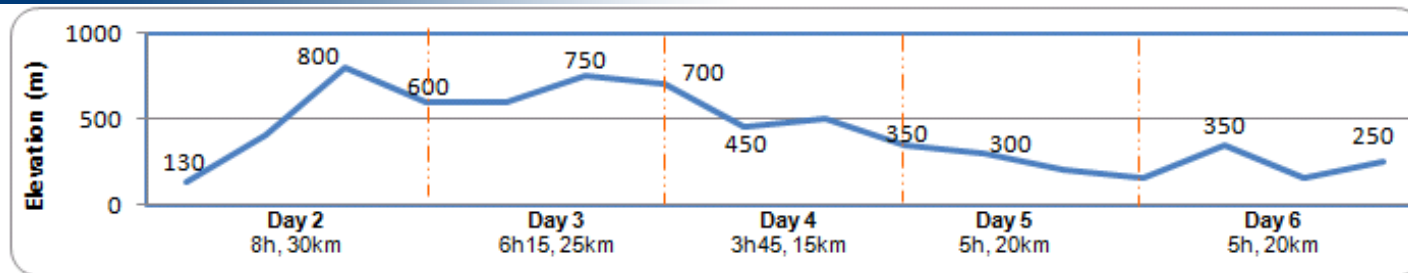
This Walking Holiday explores the 10th and last section of the Via de la Plata, the longest of all Camino routes to Santiago de Compostela! It runs through the whole country from South to North, from the hot Andalusian plains to the green mountains of Galicia, from Arabian influenced buildings to traditional stone farmhouses, and much more! This Camino in its whole offers most of Spain's rich and mixed culture.

Starting in Ourense and reaching Santiago de Compostela, this section of the Camino runs through both farmlands and the green low mountains of Galicia. As you approach the final destination of the entire Camino, or Way of Saint James, you can feel the buzz and appeal it has created all over the centuries, as heritage such as chapels, crosses, and statues linked to the Camino can be seen every day during the walk. With many up and downs, this section can be seen as challenging, but, with Santiago de Compostela being the final stage, this is certainly the most rewarding of the whole Via de la Plata route!


[maps](#)

#### Via Plata + Por + Puy

Use the navigation tools on the left to zoom-in

[Day By day](#)


### » Day 1 – Ourense

Ourense is ideally located on both banks of Rio Mino, a major Galician river. The city's old quarter is home to the dominating XIIth century cathedral, the main square and its arcades, and pedestrian streets with many bars and restaurants that will suit anyone's taste.



**Town:** ATM, Shops, all facilities

### » Day 2 – Ourense to Monasterio de Oseira (8h, 30km, +570m -200m)

Leave Ourense crossing the Puente Viejo, a XIIth century bridge over Rio Mino. Then we follow a main road for a few kilometres, always keeping the river away to our right. After Cachaxuas, we start one of the steepest uphill part of this section but there are some great views all along the climb up. We then continue along natural shady paths through the countryside, walking through Cea before getting to Monasterio de Oseira. Short transfer to your beautiful casa rural in Casarellas.



**Town:** ATM, Shops, all facilities  
**Meals:** Breakfast, dinner

### » Day 3 - Monasterio de Oseira to Estacion de Lalin (6h15, 25km, +50m -50m)

On morning, transfer back to Monasterio de Oseira. We start the day with a climb-up to the top of a hill where the views over the agricultural valleys are a nice reward. Then the Camino runs up and down through farmlands, passing through hamlets such as Gouxá or Vidueiro. However, after Castro Dorzon, it meets up several times with the busy N-525 road during a couple of kilometres. We will then be back to the countryside to reach Estacion de Lalin.

### » Day 5 – Silleda to Ponte Ulla (5h, 20km -200m)

This day first starts with an easy stroll towards Bandeira, a town well-known for its empanadas (Galician flat filled pies). As the day goes on, the Camino continues downhill through farmlands and villages. Just before descending to Ponte Ulla, the old castle worth a visit for whoever is keen to enjoy more 360 degrees great views. In Ponte Ulla, have a closer look at the Iglesia de Santa Maria de Magdanela and its very detailed Romanesque facade.



**Town:** ATM, Shops, all facilities  
**Accommodation:** En-suite. 2\* accommodation or equivalent.  
**Meals:** Breakfast, dinner

### » Day 6 – Ponte Ulla to Santiago de Compostela (5h, 20km, +300m -200m)

Today is special, not only because it is the last day of this section, but also because it is the finishing line of the whole Via de la Plata route! As you leave Ponte Ulla, we first walk up towards Pico Sacro with its Ermita de San Sebastian and wonderful scenic views. The last kilometres to Santiago still reflect the rural atmosphere of Galicia and it is sometimes difficult to believe you are so close to such an attractive city. Finally, you reach Santiago and its world-known Cathedral, a Unesco World Heritage site.



**Town:** ATM, Shops, all facilities  
**Meals:** Breakfast, dinner

### » Day 7 – Santiago de Compostela

If you wish to stay in the area, we recommend to:

- Take your time and visit the magnificent historic centre.
- Continue with us along the wild "Camino Fisterra" (Finisterre Way), and stay overnight in the 2\* hotel in the light house!
- Visit the sandy coves and beaches of the West coast. Unique, remote, unspoilt, and not touristy. You will be amazed... Ask us!



**Town:** ATM, Shops, all facilities  
**Accommodation:** En-suite. 2\* accommodation or equivalent. You hotel is located in the centre of Lalin, 2 kilometre off trail.  
**Meals:** Breakfast, dinner

#### » Day 4 – Estacion de Lalin to Silleda (3h45, 15km, +50m - 300m)

Today is a short stage made of many gently up and downhill bits through farmlands, woodlands and villages. As we leave Estacion de Lalin, we start the day by a climb-up to Botos and we then continue to walk through several villages. At the end of the walk, we enter Silleda, a modern town with all facilities.



**Town:** ATM, Shops, all facilities  
**Meals:** Breakfast, dinner

how to get there

#### It is best to fly to Santiago de Compostela

Ryanair and Iberia/BA fly direct to Santiago de Compostela from the UK. Ryanair fly from Stansted, Nottingham East Midlands and Liverpool, and AerLingus operates from Dublin.

Many of the flights that arrive at the airport are internal Spanish flights. Iberia and Spanair offer the best selection of flights and you can fly to and from Santiago De Compostela from: Frankfurt, Paris and Rome and Barcelona, Bilbao, Fuerteventura, Gran Canaria, Lanzarote, Madrid, Malaga, Palma, Seville, Tenerife (north and South) and Valencia.

Ryanair now flies, from Madrid to Santiago de Compostela, year round twice a day.

#### To the beginning of the trip: Ourense

From Santiago Airport, take the Freire bus to Santiago bus station (Approx. 20 min). <http://www.empresafreire.com/html/ingles/seccion3.htm>. Then, bus to Ourense (Approx. 2 hours). [www.monbus.es](http://www.monbus.es)

#### Back home

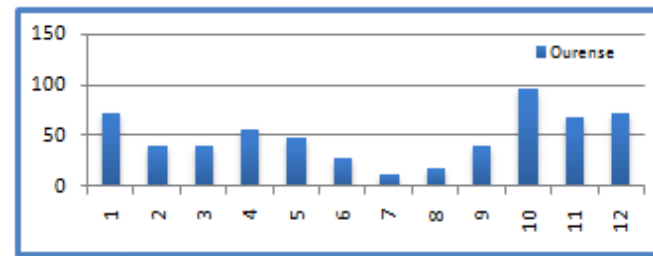
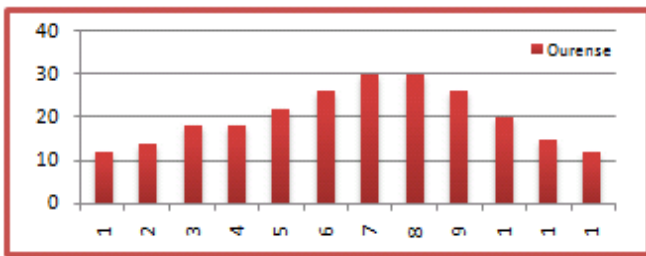
Shuttle bus from Santiago city centre to Santiago airport (Approx. 20 min).

#### WEATHER

After breakfast, we bid you farewell.



**Town:** ATM, Internet, shops, all facilities  
**Meals:** Breakfast



about the walking holiday

### hotels

Our accommodation vary from 2\* hotels to 3\* hotels or equivalent depending on availability. All rooms are en-suite and accommodation is based on character, comfort and location. Our policy is to select the best available hotel in its category at any given time, to make sure your holiday is as valuable as possible. If an accommodation is not available, we may have to find an alternative that is as suitable as possible.

### Luggage

We will transport your luggage from one hotel to the next. You only need to carry your backpack during the day!

### Included

- Luggage transferred from hotel to hotel
- En-suite Rooms
- Half Board during the hike
- Detailed Walking Notes
- Map
- Pilgrim passport

### Not Included

- Flights
- Insurance (recommended)
- Drinks
- Dinners in Ourense and Santiago
- Transfer from/to airport

### prices

Period	Price (€)	Single Room (€)	Solo departure (single room included) (€)	Picnic lunches (€)
<b>High Season</b> April, May, June, September	650	140	240	50
<b>Mid Season</b> July, August, October	580	120	220	
<b>Low Season</b> January, February, March, November, December	490	100	220	

### OPTIONS

Extra Night in Santiago				Extra Night in Ourense (€)				Transport To Ourense from Santiago (€pp)  For info on transfers for more passengers or from other airports, please <a href="#">ask us</a> .
3* Hotel B&B (€)		5* Parador de Santiago, B&B (€)		2* Hotel B&B (€)		3* Hotel B&B (€)		
Single	Double (pps)	Single	Double (pps)	Single	Double (pps)	Single	Double (pps)	
95	65	205 or Upgrade last night +110	145 or Upgrade last night +145	60	44	95	65	2-8 people  €58pp

\*Subject to minimum group requirements.

[Top](#)