

VIA DE LA PLATA Section 1


[▶ BOOK NOW!](#)

Walk from Seville to Monesterio - 108 km

7 Days/6 Nights



Half Board

en-suite

year round

From €490

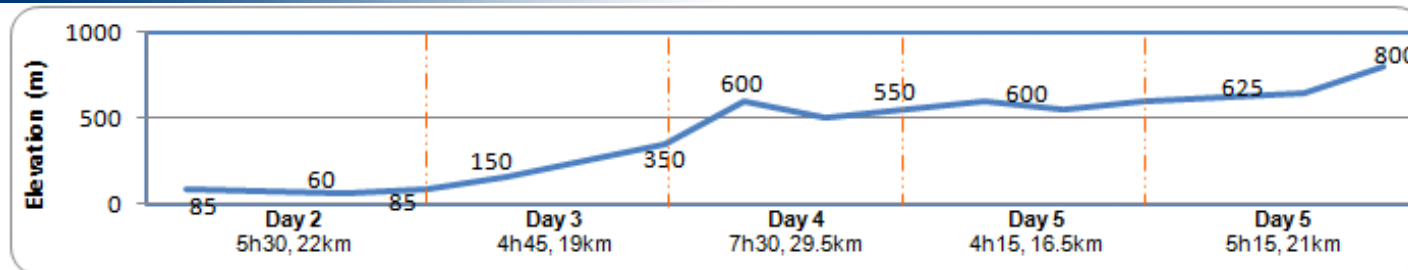
This Walking Holiday explores the first section of Via de la Plata, the longest of all Camino routes to Santiago de Compostela! It runs through the whole country from South to North, from the hot Andalusian plains to the green mountains of Galicia, from Arabian influenced buildings to traditional stone farmhouses and much more!

Starting from Seville, in the heart of Andalusia, to Monesteria at the gateway of Extremadura, the "Scallop Shells" lead us north towards Santiago. This section requires a reasonable level of fitness. Every day you are guaranteed a high level of comfort, as we carefully choose accommodation with charm and character.

[maps](#)


Via Plata + Por + Puy

Use the navigation tools on the left to zoom-in

[Day By day](#)


» Day 1 – Seville

Capital city of Andalusia, Sevilla appeals to visitors with its rich architectural heritage, its atmosphere, its year-round sunny weather and incredible atmosphere. Among the city's main attractions, don't miss the massive and impressive Gothic UNESCO World Heritage cathedral, and of course, the Plaza de Espana.



Town: ATM, Internet, shops, all facilities.

» Day 5 – Almaden de la Plata to El Real de la Jara (4h15, 16.5km, +200m -250m)

The route we follow today gives us a real feel for traditional Andalusia; black pigs, bulls and horses can all be seen from the Way. The Camino does not enter any village until we reach El Real de la Jara. A short transfer will take you to your hotel in Santa Ollala de la Calla.

» **Day 2 – Sevilla to Guillena (5h30, 22km +25m -25m)**

Today is not only the first day of this section, but also the starting point of the whole Via de la Plata route. After leaving the heart of the city, we pass through several industrial estates until we reach Santiponce and the ruins of Italica, a ancient Roman city. It is then a peaceful walk through flat landscapes, occupied by sunflowers, cotton fields and olive trees. Once in Guillena, it's just a short transfer to your hotel in Castilblanco de los Arroyos.



Town: ATM, shops, all facilities.
Meals: Half Board

» **Day 3 - Guillena to Castilblanco de los Arroyos (4h45, 19km, +265m)**

Transfer back to Guillena. The Camino leaves the whitewashed town of Guillena and quickly reaches Venta, a modern town nearby. Then, for the most part, it runs through the Andalusian countryside with orange and olive groves and other farmlands. As we enter the National Park of Sierra Norte de Sevilla, the landscape becomes more dry and rocky. The last leg of the day is a steep climb up to the beautiful town of Castilblanco de los Arroyo.



Town: ATM, shops, all facilities.
Accommodation: 2* accommodation, en-suite.
Meals: Half Board

» **Day 4 – Castilblanco de los Arroyos to Almaden de la Plata (7h30, 30km, +400m -250m)**

We start this day with an uphill walk, passing by Ermita de Santa de Escardiel. A few kilometres further on, we enter Parque Forestal de El Berrocal where oak trees offer shelter from the sun. An undulating path leads us Almaden de la Plata.



Town: ATM, shops, all facilities.
Meals: Half Board

» **Day 6 - El Real de la Jara to Monesterio (4h15, 21km, +2500 -50m)**

Transfer back to El Real de la Jara. Soon after El Real de la Jara, the Camino leaves Andalusia and enters Extremadura. During the first half of the day the terrain is mostly flat. A gentle ascent will offer some nice views over the Sierra Morena. The landscape surrounding us is mostly occupied by cows and sheep as there is no village (and little shade) along this stretch to Monesterio.



Town: ATM, shops, all facilities.
Meals: Half Board

» **Day 7 – Monesterio**

After breakfast, we bid you farewell.



Town: ATM, Internet, shops, all facilities.
Meal: Breakfast



Town: ATM, shops, all facilities.
Meals: Half Board

how to get there

It is best to fly to Seville

[Aer Lingus](#), [Iberia](#), [Vueling](#) and [Ryanair](#) fly to Sevilla, amongst other companies. Ryanair fly from Dublin, London, Liverpool and Bristol. Iberia also fly from Dublin and the UK. www.sevilla-airport.com/en/airport_info.php

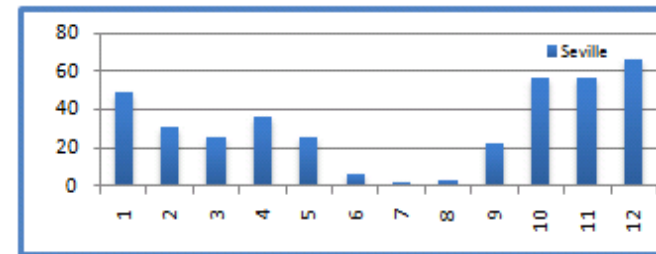
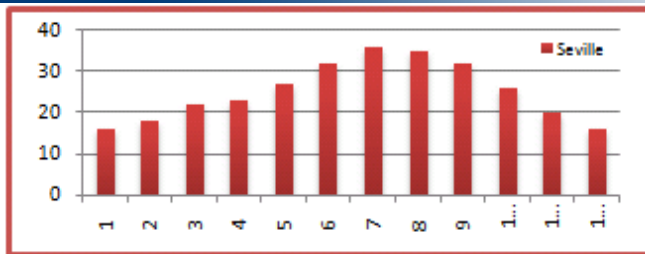
To start your walking holiday: Seville

From Seville Airport, bus to Seville city centre, (Approx. 25min).

Back home

Buses from Seville city centre to Seville Airport, (Approx. 25min).

WEATHER



about the walking holiday

hotels

Our accommodation varies from 2* to 3* hotels, or equivalent depending on availability. All rooms are en-suite and we select our accommodation on its character, comfort and location. Our policy is to select the best available hotel in its category at any given time.

Luggage

We will transport your luggage from one hotel to the next. You only need to carry your backpack during the day!

Included

Not Included

- Luggage transferred from hotel to hotel
- Rooms en-suite
- Half Board during the hike
- Detailed Walking Notes
- Map
- Pilgrim passport
- Flights
- Insurance (recommended)
- Drinks
- Dinners in Seville and Monesterio
- Transfer from/to airport

prices

Period	Price (€)	Single Room (€)	Solo departure (single room included) (€)	Picnic lunches (€)
High Season April, May, June, September	650	140	240	50
Mid Season July, August, October	580	120	220	
Low Season January, February, March, November, December	490	100	220	

OPTIONS

Extra Night in Seville				Extra Night in Monesterio (€)				Transport To Seville hotel from airport (€pp) For info on transfers for more passengers or from other airports, please ask us .
2* Hotel B&B (€)		3* Hotel B&B (€)		2* Hotel B&B (€)		3* Hotel B&B (€)		
Single	Double (pps)	Single	Double (pps)	Single	Double (pps)	Single	Double (pps)	
60	44	95	65	60	44	95	65	2-8 people €10pp

*Subject to minimum group requirements.

[Top](#)