

## RESPONSIBLE CAMINO - VIA DE LA PLATA Section 10



## Walk from Ourense to Santiago de Compostela – 110 km

[▶ BOOK NOW!](#)

7 Days/6 Nights



Half Board

 Traditional rural guesthouses  
& 2 nights in 3\* hotels year round

From €530

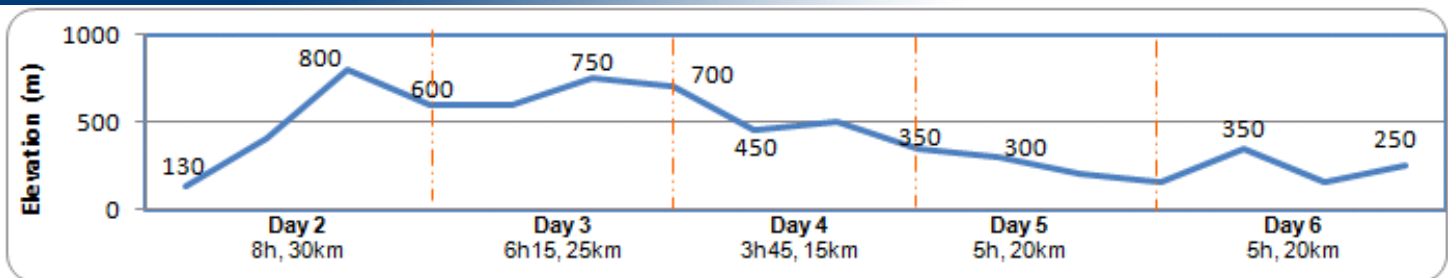
Our Responsible Camino walking holiday offers a unique chance to explore the Via de la Plata route to Santiago de Compostela in a more traditional way. You will stay in family-run "casas rurales" (rural guesthouses), often century-old buildings and tastefully renovated. It also gives you a chance to be closer to nature and make your journey to Saint-James even more authentic. Gastronomy is also a highlight on the Responsible Camino, with traditional meals cooked in our selected guesthouses.

Starting in Ourense and reaching Santiago de Compostela, this section of the Camino runs through both farmlands and the green low mountains of Galicia. As you approach the final destination of the entire Camino, or Way of Saint James, you can feel the buzz and appeal it has created all over the centuries, as heritage such as chapels, crosses, and statues linked to the Camino can be seen every day during the walk. With many up and downs, this section can be seen as challenging, but, with Santiago de Compostela being the final stage, this is certainly the most rewarding of the whole Via de la Plata route!


[maps](#)

 View [Responsible Caminos](#) in a larger map

### Day By day



## » Day 1 - Ourense

Ourense is ideally located on both banks of Rio Mino, a major Galician river. The city's old quarter is home to the dominating XIIIth century cathedral, the main square and its arcades, and pedestrian streets with many bars and restaurants that will suit anyone's taste.



**Town:** ATM, shops, all facilities.  
To be checked with Roland >  
Accommodation on Plata? 3\* hotel in Ourense?

## » Day 2 – Ourense to Monasterio de Oseira (8h, 30km, +570m -200m)

Leave Ourense crossing the Puente Viejo, a XIIth century bridge over Rio Mino. Then we follow a main road for a few kilometres, always keeping the river away to our right. After Cachaxuas, we start one of the steepest uphill part of this section but there are some great views all along the climb up. We then continue along natural shady paths through the countryside, walking through Cea before getting to Monasterio de Oseira. Short transfer to your beautiful casa rural in Casarelllos.



**Guesthouse:** Comfortable village house. The surrounding area has many traditional, stone-built properties typical of rural Galicia. En-suite room.

**Meals:** On-site breakfast & dinner

## » Day 3 – Monasterio de Oseira to Estacion de Lalin (6h15, 25km, +50m -50m)

On morning, transfer back to Monasterio de Oseira. We start the day with a climb-up to the top of a hill where the views over the agricultural valleys are a nice reward. Then the Camino runs up and down through farmlands, passing through hamlets such as Gouxá or Vidueiro. However, after Castro Dorzon, it meets up several times with the busy N-525 road during a couple of kilometres. We will then be back to the countryside to reach Estacion de Lalin.



**Guesthouse:** Located in a spot of singular beauty and overflowing vegetation, this ancient "Pazo" forms an impressive walled building, with a great interior courtyard and porch. En-suite room.

**Meals:** On-site breakfast & dinner

## » Day 5 – Silleda to Ponte Ulla (5h, 20km - 200m)

This day first starts with an easy stroll towards Bandeira, a town well-known for its empanadas (Galician flat filled pies). As the day goes on, the Camino continues downhill through farmlands and villages. Just before descending to Ponte Ulla, the old castle worth a visit for whoever is keen to enjoy more 360 degrees great views. In Ponte Ulla, have a closer look at the Iglesia de Santa Maria de Magdanela and its very detailed Romanesque facade.



**Guesthouse:** Century old refurbished traditional galician farmhouse surrounded by a peaceful garden.

**Meals:** On-site breakfast, dinner

## » Day 6 – Ponte Ulla to Santiago de Compostela (5h, 20km, +300m -200m)

Today is special, not only because it is the last day of this section, but also because it is the finishing line of the whole Via de la Plata route! As you leave Ponte Ulla, we first walk up towards Pico Sacro with its Ermita de San Sebastian and wonderful scenic views. The last kilometres to Santiago still reflect the rural atmosphere of Galicia and it is sometimes difficult to believe you are so close to such an attractive city. Finally, you reach Santiago and its world-known Cathedral, a Unesco World Heritage site.



**Accommodation:** 3\* hotel in the historic centre. Renovated 18th-century family house, en-suite.

**Town:** ATM, Internet, shops, all facilities

**Meals:** Breakfast, dinner

## » Day 7 – Santiago de Compostela

After breakfast we bid you farewell.

If you wish to stay in the area, we recommend that you:

- Take your time and visit the magnificent historic centre.
- Continue with us along the wild "Camino Fisterra" (Finisterre Way), and stay overnight at the 2\* hotel in the light house!
- Visit the unspoilt sandy coves and beaches of the west coast. With very few tourists, you are guaranteed a very special experience. Ask us for more information to walk it via our Green Camino Walking holiday!

## » Day 4 – Palace do Rei to Arzúa (7h 28km +140m -340m)

Whether you choose to walk to Arzua in once or to split it in Melide, there are uphill bits on both halves of the day, hence the challenge of today's walk. When leaving Palas do Rei, the Camino mainly follows the national road, still passing through few hamlets. At Melide (454m), stop in one of the many restaurants to try some local specialties. Once passed Melide, the Camino goes back to the countryside, following forest tracks and quiet country roads. After a last uphill section from Ribadesa de Baixo, you will reach Arzua for a well deserved rest.



**Town:** ATM, Internet, shops, all facilities

**Meals:** Breakfast

**Guesthouse:** Beautiful stonehouse surrounded by a spacious garden. Traditional home-cooked food. En-suite room.

**Meals:** On-site breakfast & dinner

**NOTE:** If you wish to take your time, we can split this walking day in 2 (15km & 13km), staying overnight in the bustling market town of Melide. Here you will stay in the same guesthouse as the one described above.



### how to get there

#### It is best to fly to Santiago de Compostela

Ryanair and Iberia/BA fly direct to Santiago de Compostela from the UK. Ryanair fly from Stansted, Nottingham East Midlands and Liverpool, and AerLingus operates from Dublin.

Many of the flights that arrive at the airport are internal Spanish flights. Iberia and Spanair offer the best selection of flights and you can fly to and from Santiago De Compostela from: Frankfurt, Paris and Rome and Barcelona, Bilbao, Fuerteventura, Gran Canaria, Lanzarote, Madrid, Malaga, Palma, Seville, Tenerife (north and South) and Valencia.

Ryanair now flies, from Madrid to Santiago de Compostela, year round twice a day

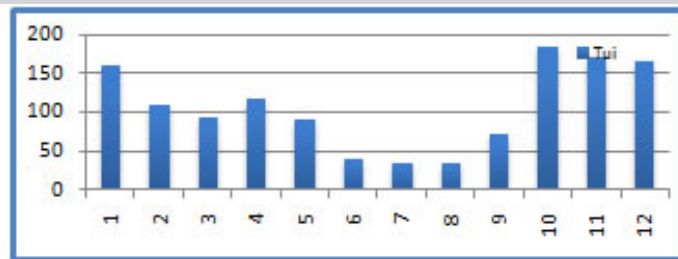
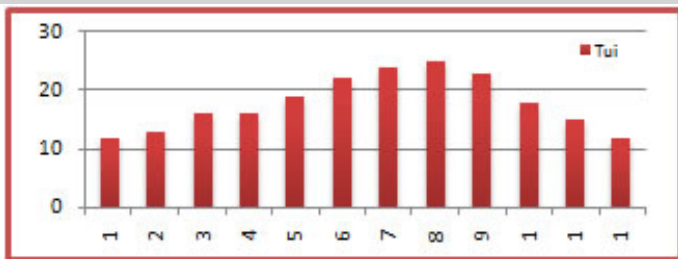
#### To the beginning of the trip: Ourense

From Santiago Airport, take the Freire bus to Santiago bus station (Approx. 20 min). <http://www.empresafreire.com/html/ingles/seccion3.htm>. Then, bus to Ourense (Approx. 2 hours). [www.monbus.es](http://www.monbus.es)

#### Back home

Shuttle buses from Santiago city center to the airport (20mins).

### WEATHER



about the walking holiday

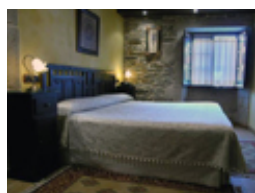
## ACCOMMODATION

The accommodation we have selected on our Responsible Camino is the best in terms of authenticity, healthy food, tradition, peace of mind and comfort. From ancient pilgrim hospitals to 17th century farmhouses, often of typical Galician architecture and always wonderfully renovated, these "casas rurales" are all set in beautiful locations. Some grow their own vegetables or produce their own wine. As well as spacious gardens, some even have a swimming pool in which to relax after the walk!

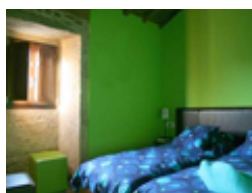
These guesthouses have been carefully selected for their character, comfort, location, and friendliness, and are subject to availability. If the guesthouse described is not available we provide an alternative of the same standard of comfort and price.



Accommodation  
1



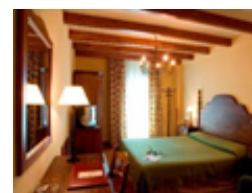
Accommodation  
2



Accommodation  
3



Accommodation  
4



Accommodation  
5

## Luggage

We will transport your luggage from one hotel to the next. You only need to carry your backpack during the day!

### Included

- Nights in authentic guesthouses full of character during the walk
- Nights in 3\* hotels in Ourense and Santiago de Compostela
- Luggage transferred from hotel to hotel
- En-suite Rooms
- Half-board during the hike
- Detailed Walking Notes
- Map
- Pilgrim passport

### Not Included

- Flights
- Insurance (recommended)
- Drinks
- Dinners in Ourense and Santiago de Compostela
- Transfer from/to airport

## prices & Options

Period	Price (€)	Single Room (€)	Solo departure (include single room) (€)	Picnic lunches (€)
<b>High Season</b> April, May, June, September	700	140	240	50
<b>Mid Season</b> July, August, October	630	120	220	
<b>Low Season</b> January, February, March, November, December	530	100	220	

## prices &amp; Options

Transport To Ourense from Santiago (€pp)	Extra Night in Santiago				Extra Night in Ourense (€)			
	3* Hotel B&B (€)		5* Parador de Santiago, B&B (€)		2* Hotel B&B (€)		3* Hotel B&B (€)	
	Single	Double (pps)	Single	Double (pps)	Single	Double (pps)	Single	Double (pps)
For info on transfers for more passengers or from other airports, please <a href="#">ask us</a> .	95	65	205	145	60	44	95	65
2-8 people €58pp			or Upgrade last night +110	or Upgrade last night +110				

[Top](#)