

Portuguese way / Camino Portugues Section 5



Walk From Tui to Santiago de Compostela - 117km

[▶ BOOK NOW!](#)

8 Days/7 Nights



Half Board

hotels en-suite

year round

From €560

This Walking Holiday explores the Camino Portugues / Portuguese Way, following the iconic Camino de Santiago de Compostela, the famous Way of Saint James.

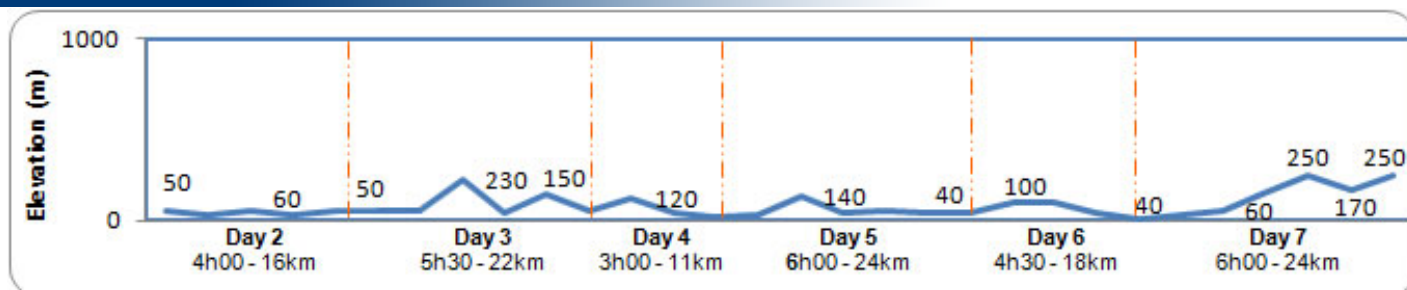
This Camino, which was used by Queen Isabel of Portugal in the 13th Century, heads north following the Atlantic coast of Portugal & Spain. The Camino Portugues gently winds along ancient tracks & paths, running through woodlands, villages, farmlands & historic towns.

Everyday, during the walk, you are guaranteed a high level of comfort and gastronomy. This section requires a reasonable level of fitness. However, it's a highly rewarding walk that includes numerous cultural highlights.

[maps](#)

[View Via Plata + Por in a larger map](#)

Day By day



» DAY 1 – Tui

You will be booked in a hotel in the heart of Tui. The rooms are en-suite.

Take a walk through the picturesque streets of this town, then as you approach the Plaza de San Fernando, the silhouette of the west-facing facade of the 12th-century cathedral will leave you breathless.



Town: Internet, ATM, shops, all facilities.

Accommodation: 3* hotel, en-suite.

Meal: B&B

» DAY 2 – From Tui to O Porrino (16km 4h +90m -80m)

From Tui's old port the Camino winds its way up to

» DAY 5 – From Pontevedra to Caldas do Rei (24km 6h +110m -100m)

Passing chestnut groves, the Camino leaves Pontevedra and runs parallel to the railway for a while. After passing through the hamlet of Ponte Cabras, we encounter the rectory of Santa Maria de Alba, tucked away among pine and eucalyptus trees. Emerging from the dense woods of Lombo da Maceira, you'll see a statue of Saint James the pilgrim, his cane pointing the way to proceed. The lovely village of Tibo, with its fountain, public washing place and stone cross, bring us to Caldas do Rei.

the old town, following the so-called Camino da Barca. Then through the Tunel das Monxas, the Camino enters a very steep section and leads to the evocative bridge of San Telmo. From there, travelling over a less abrupt terrain, we come to the town of O Porrino.



Town: Internet, ATM, shops, all facilities.

Accomodation: 2* hotel, en-suite.

Meal: Half Board



Town: Internet, ATM, shops, all facilities.

Accomodation: 3* hotel, en-suite.

Meal: Half Board

» DAY 3 – From O Porrino to Arcade (22km 5h30 +310m -300m)

The terrain becomes easier as we cross the Louro valley. Keeping the valley to the east, after a gentle climb you arrive at the chapel of Santiaguino de Antas; a pleasant place to take a rest. We now enter a wide expanse of woodland. Surrounded by pine trees, the Camino starts its descent through the hamlet of Setefontes and comes to Arcade.



Town: Internet, ATM, shops, all facilities.

Accomodation: 2* hotel, en-suite.

Meal: Half Board

» DAY 4 – From Arcade to Pontevedra (11km 3h +100m -180m)

Reaching the historic site of Ponte Sampaio, the Camino crosses the Verdugo River. During the War of Independence, Napoleon's army suffered one of its greatest defeats in Galicia at this bridge. Heading up a cobbled footpath we come to the 13th century church of Santa Maria. Views of the Bay of Vigo are stunning!



Town: Internet, ATM, shops, all facilities.

Accomodation: 2* hotel, en-suite.

Meal: Half Board



Town: Internet, ATM, shops, all facilities.

Accomodation: 2* hotel, en-suite.

Meal: B&B

» DAY 7 – From Padron to Santiago (24km 6h +310m -60m)

The Camino passes through many small villages and hamlets before arriving at the Baroque sanctuary of A Esclavitude. On a hilltop to the left stands the mysterious, abandoned ruins of the hillfort Castro Lupario, and couple of kilometres later, we come to the oldest wayside crosses in Galicia. As we near Agro dos Monteiros, it is now possible to see the towers of the cathedral. Finally the Camino passes by the ruins of a castle known as A Rocha Vella, before entering the city of the Apostle.



Town: Internet, ATM, shops, all facilities.

Accomodation: 3* hotel, en-suite.

Meal: Half Board

» DAY 8 – Santiago de Compostela

After breakfast we bid you farewell.



Meal: B&B

how to get there

It is best to fly to Santiago

[Ryanair](#) and [Iberia/BA](#) fly direct to Santiago de Compostela from the UK. Ryanair fly from Stansted, Nottingham East Midlands and Liverpool. [Aer Lingus](#) operates from Dublin.

Many of the flights that arrive at the airport are from internal Spanish destinations. [Iberia](#) and [Spanair](#) offer the best selection of flights and you can fly to and from Santiago De Compostela from: Frankfurt, Paris and Rome and Barcelona, Bilbao, Fuerteventura, Gran Canaria, Lanzarote, Madrid, Malaga, Palma, Seville, Tenerife and Valencia.

To start your walking holiday: Tui

To begin at Tui you will need to get 2 buses from the airport (about €15pp).

1 - Santiago airport to Vigo (1hr). See <http://www.monbus.es> and look for

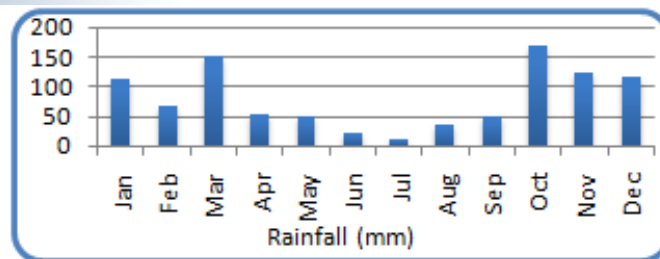
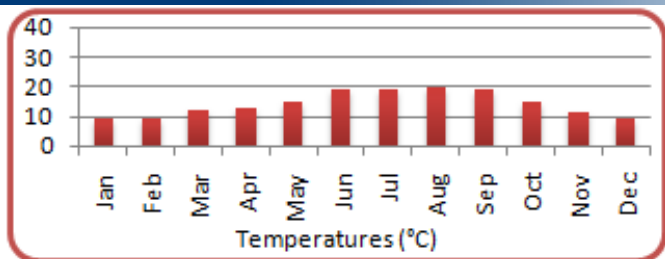
"Horarios"(timetables) on the left.

2 - Vigo to Tui (30mins), several buses a day, until late. See <http://www.autna.com/regulares.php>

Back home: from Santiago

Regular shuttle buses from Santiago city center to the airport (20mins).

WEATHER



about the walking holiday

hotels

Hotels have been carefully selected for their comfort, location, friendliness and character, and are subject to availability. If the hotel described is not available we provide an alternative with the same standard of comfort & price.



Tui



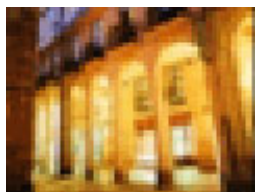
Arcade



Pontevedra



Padron



Santiago

Luggage

We will transport your luggage from one hotel to the next. You only need to carry your backpack during the day!

Included	Not Included
<ul style="list-style-type: none"> Luggage transferred from hotel to hotel Rooms en-suite Half-Board during the hike Detailed Walking Notes Map Pilgrim passport 	<ul style="list-style-type: none"> Flights Insurance (recommended) Drinks Dinner first and last nights Transfers from/to airport

prices & Options

Period	Price (€)	Single Room (€)	Solo departure (include single room) (€)
High Season April, May, June, September	750	159	280
Mid Season July, August, October	680	136	252
Low Season January, February, March, November, December	560	113	252

Options

Picnic lunches (€)	Extra Night in Tui				Extra Night in Santiago				Transport ToTui From Porto (€pp)
	2* Hotel B&B (€)		3* Hotel B&B (€)		3* Hotel B&B (€)		5* Parador B&B (€)		
	Single	Double (pps)	Single	Double (pps)	Single	Double (pps)	Single	Double (pps)	
60	60	44	95	65	95	65	205 or Upgrade last night +110	145 or Upgrade last night +110	For info on transfers for more passengers or from other airports, please ask us . 2-8 people €60pp
Special rates for groups of 6+									

[Top](#)