

Portuguese way / Camino Portugues Section 4


[▶ BOOK NOW!](#)

Walk from Porto to Tui – 126 km

8 DAYS/7 NIGHTS



Half Board

HOTELS & GUESTHOUSES,
EN-SUITE

year round

From €560

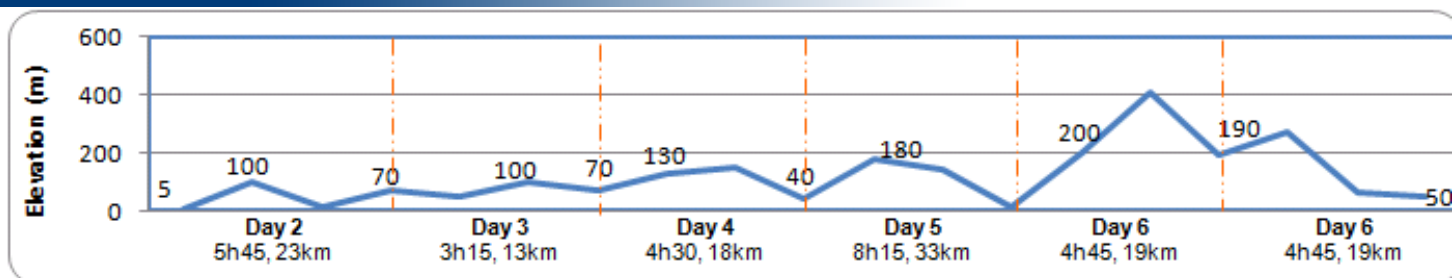
The Portuguese Way became very popular after the country gained its independence in the mid 12th century. Nowadays, some people claim the Portuguese Way offers one of the richest cultural and architectural heritages of the whole of the existing Caminos. The Portuguese way starts in Lisbon and crosses Lisboa, Alentejo and the Central and Northern regions of Portugal. It then enters Spain in Tui to continue North through Galicia and towards Santiago de Compostela!

Starting in Porto, a UNESCO World Heritage city, this 4th section of the Portuguese Way crosses Northern Portugal to end up in Tui, on the other side of the border, in Galicia, Spain. From the entire city of Porto itself to the famous ceramics of Barcelos, from the flat landscape of the Portuguese Atlantic coast to the greener hills of Northern Portugal and Galicia, not to forget the numerous wonderfully decorated Baroque churches all along the way, this stretch of the Portuguese Way has plenty to offer! Moreover, the mostly flat landscape and reasonable long daily walks make it accessible to anyone with an average level of fitness!


[maps](#)

Portuguese Way

Use the navigation tools on the left to zoom-in

[Day By day](#)


» DAY 1 – Porto

The entire old city of Porto was added to the UNESCO World Heritage list in 1996 and there is plenty to do and see in here indeed. Set on the bank of the Douro river and near the Atlantic Ocean, the city is also internationally known for its famous Port wine. And there are plenty of terraces and restaurants in Porto to enjoy it!



Town: ATM, Shops, all facilities

» DAY 2 – Porto to Fajozes (5h45, 23km, +250m -150m)

The mainly flat terrain makes this first walking day an easy start, even though we spend most of the day along busy roads, as often on the Camino when we leave big cities. However, there are numerous old and interesting churches along the Camino or nearby, such as the twelfth century monastery Mosteiro Leca do Balio.



Town: ATM, Shops, all facilities
Meals: Breakfast, dinner

» DAY 3 – Fajolez to Arcos (6h15, 25km, +50m - 50m)

From Fajolez the Camino starts to head North East, gradually getting away from the coastline. A few kilometres after leaving Fajolez, we cross the beautiful medieval Dom Zameiro bridge. The first woodlands of this section also appear here, with pine and eucalyptus trees providing shade from the sun.



Town: ATM, Shops, all facilities
Accommodation: En-suite. 2* accommodation or equivalent. Your hotel is located in the centre of Lalin, 2 kilometre off trail.
Meals: Breakfast, dinner

» DAY 4 – Arcos to Barcelos (3h45, 15km, +50m -300m)

Today is an enjoyable and short enough walk as we leave Arcos to reach the lively market town of Barcelos. Gently undulated woodlands and charming villages alternate on today's route and we then have the option to visit the Chapel of Santa de Franqueira,

» DAY 5 – Barcelos to Ponte de Lima (8h15, 33km, +220m -220m)

As we leave Barcelos, we start to feel Galicia approaching. Indeed, the landscape begins to change, becoming both hillier and greener, offering some nice views all day long. This day is the hardest of the section as there are not so many towns nor villages along the Camino and few steep uphill bits but it is also the most beautiful one!



Town: ATM, Shops, all facilities
Accommodation: En-suite. 2* accommodation or equivalent.
Meals: Breakfast, dinner

» DAY 6 – Ponte de Lima to San Pedro de Rubiaes (4h45, 19km, +450m -250m)

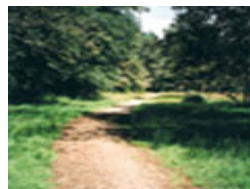
As for the previous day, there is a good deal of ascent today along the Camino, with its culminated point at Alto da Portela Grande (alt. 410m). There are also numerous chapels and wayside crosses where pilgrims to Santiago have placed stones to mark their passage.



Town: ATM, Shops, all facilities
Meals: Breakfast, dinner

» DAY 7 – San Pedro de Rubiaes to Tui (5h, 20km, +150m, -250m)

Today is a special day as we start the walk in Portugal, and end it up in Galicia, in Spain! The landscape here is very like the rest of Galicia: green and hilly. So it is no surprise we start by walking down towards Rio Coura before starting a long climb up to Alto Sao Bento da Porta Aberta. Then, it is a steep descent to Fontoura before continuing towards Rio Minho, natural and modern border between the two countries. We then head towards Tui, the last stop over of this section.



Town: ATM, Internet, shops, all facilities
Meals: Breakfast

» DAY 8 – Tui

After breakfast, we bid you farewell.

perched at 290m and to enjoy a panoramic view from the top of the hill. Further on, we cross one of the many well preserved medieval bridges of the Camino and soon we enter Barcelos and its attractive main square.



Town: ATM, Internet, shops, all facilities

Meals: Breakfast



Town: ATM, Shops, all facilities

Meals: Breakfast, dinner

how to get there

You can fly either to Porto in Portugal or Vigo in Spain, as several different companies fly to both airports, directly from UK, Ireland, and main cities in Europe.

To Porto

Ryanair fly direct to Porto from several cities in the UK and Dublin. Several other companies fly to Porto Airport. www.ana.pt

To Vigo

Several companies fly to Vigo from main cities in the UK & Dublin. <http://www.aena.es/>

To the beginning of the trip: Porto

From Porto Airport to Porto city centre, From Porto Airport to Porto city centre, take either the Subway, linea violeta (www.metrodoporto.pt), either an urban bus (www.stcp.pt). Regular departures all day long.

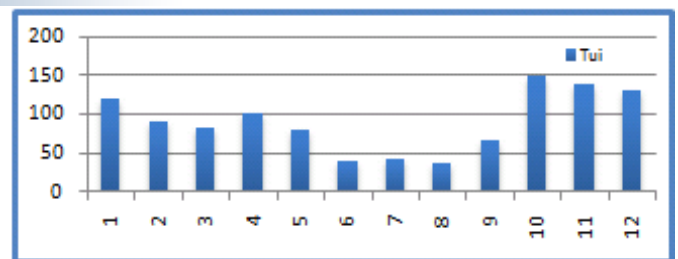
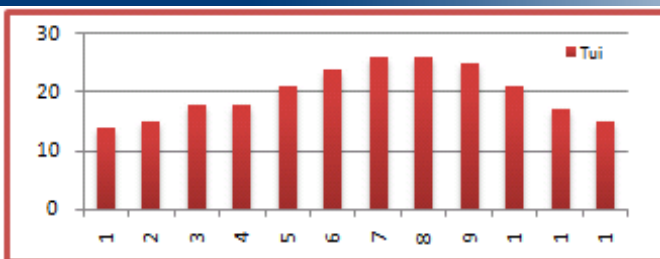
From Vigo Airport, bus to Vigo bus station. Then, bus to Porto city centre (Approx. 1hr), 4 departures a day on weekdays. <http://www.autna.com/regulares.php>

Back home

To Vigo Airport: Bus from Tui to Vigo bus station, regular departures (Approx. 30 min). <http://www.ylogico.com/aguarda/buses.php>. Then urban bus (C9a route) to Vigo Airport (Approx. 20 min). www.vitrassa.es

To Porto Airport: Bus from Tui to Vigo bus station, regular departures (Approx. 30). <http://www.ylogico.com/aguarda/buses.php>. Then direct bus to Porto Airport (Approx. 45min), several departures a day. <http://www.autna.com/regulares.php>

WEATHER



about the walking holiday

hotels

Our accommodation vary from 2* hotels to 3* hotels or equivalent depending on availability. All rooms are en-suite and accommodation is based on character, comfort and location. Our policy is to select the best available hotel in its category at any given time, to make sure your holiday is as valuable as possible. If an accommodation is not available, we may have to find an alternative that is as suitable as possible.

Luggage

We will transport your luggage from one hotel to the next. You only need to carry your backpack during the day!

Included

- Luggage transferred from hotel to hotel
- Rooms en-suite
- Half-Board during the hike
- Detailed Walking Notes
- Map
- Pilgrim passport

Not Included

- Flights
- Insurance (recommended)
- Drinks
- Dinners in Porto and Tui
- Transfers from/to airport

prices & Options

Period	Price (€)	Single Room (€)	Solo departure (include single room) (€)	Picnic lunches (€)
High Season April, May, June, September	750	159	280	60
Mid Season July, August, October	680	136	252	
Low Season January, February, March, November, December	560	113	252	

Options

Transport To Porto hotel from airport (€pp)	Extra Night in Porto				Extra Night in Tui					
	2* Hotel B&B (€)		3* Hotel B&B (€)		2* Hotel B&B (€)		3* Hotel B&B (€)			
	Single	Double (pps)	Single	Double (pps)	Single	Double (pps)	Single	Double (pps)		
For info on transfers for more passengers or from other airports, please ask us .	60	44	95	65	60	44	95	65		

2-8 people
€10pp

[Top](#)