

Portuguese way / Camino Portugues Section 2


[▶ BOOK NOW!](#)

Walk from Santarem to Coimbra– 151 km

8 DAYS/7 NIGHTS



Half Board

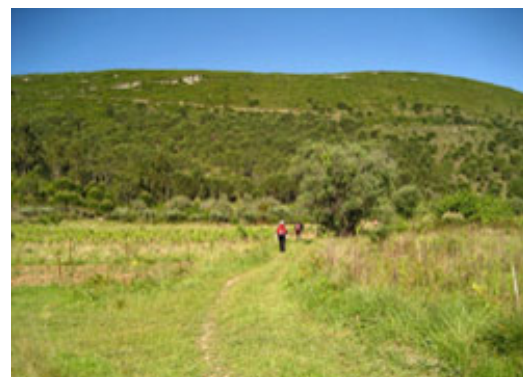
HOTELS & GUESTHOUSES,
EN-SUITE

year round

From €560

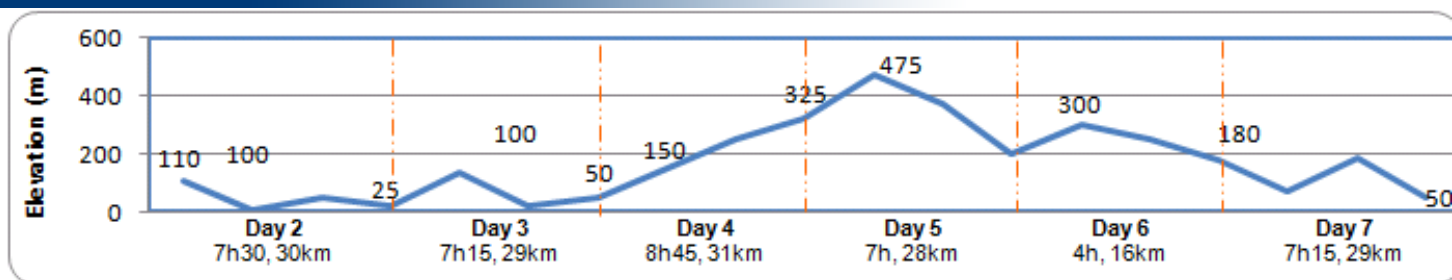
The Portuguese Way became very popular after the country gained its independence in the mid 12th century. Nowadays, some people claim the Portuguese Way offers one of the richest cultural and architectural heritages of the whole of the existing Caminos. The Portuguese way starts in Lisbon and crosses Lisboa, Alentejo and the Central and Northern regions of Portugal. It then enters Spain in Tui to continue North through Galicia and towards Santiago de Compostela!

This 2nd section of the Portuguese Way stretches between Santarem and Coimbra, through the province of Ribatejo, the only one in the whole of Portugal that does not border either the Atlantic Coast, either Spain. So this walking holiday explores the heart of Portugal, a region of traditions and with cities full of history such as Santarem, Tomar or Coimbra, this part of the Portuguese Way is yet to be discovered!

[maps](#)


Portuguese Way

Use the navigation tools on the left to zoom-in

[Day By day](#)


» DAY 1 – Santarem

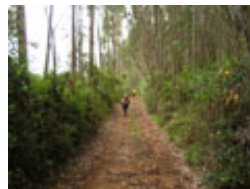
The city of Santarem is perched on top of a hill, overlooking the Rio Tejo valley. Santarem is a charming historic and human-size city where visitors can wander around the tortuous streets and enjoy the relaxing Portuguese way of life.



Town: ATM, Shops, all facilities

» DAY 5 – Alvaizere to Ansiao (16km, 4h +325m -450m)

Leaving Alvaizere, we start with a steep climb up followed by an as steady descend. The Camino continues up and down through crop fields and olive groves and along the medieval route that brings us to Ansiao.



Town: ATM, Shops, all facilities
Accommodation: En-suite. 2* accommodation or equivalent.
Meals: Breakfast, dinner

» DAY 2 – Santarem to Golega (30km, 7h30,

+50m -125m)

Leaving Santarem, we soon find ourselves walking along quiet country lanes as today the Camino heads North East, mostly following Rio Tejo. It passes through very few yet charming villages, a land of campinos (cattle herders), horses and bulls (as the region is famous for bullfighting). This is a long walking day but the flat terrain makes it easy enough to complete.



Town: ATM, Shops, all facilities
Meals: Breakfast, dinner

» **DAY 3 – Golega to Tomar (29km, 7h15, +350m -200m)**

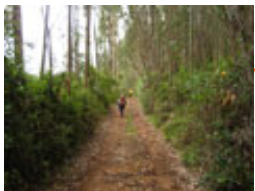
We start this day heading towards one of the country's nicest manor house, Finca da Cardiga. Then we continue through the quiet hilly countryside, passing through a few scattered villages. The day finishes on Praza de la Republica in Tomar, in the heart of the old city.



Town: ATM, Shops, all facilities
Accommodation: En-suite. 2* accommodation or equivalent. Your hotel is located in the centre of Lalin, 2 kilometre off trail.
Meals: Breakfast, dinner

» **DAY 4 – Tomar to Alvaiazere (31km, 8h15 +550m -450m)**

Today announces a change of terrain as we go up and down along several wooded valleys, roman roads, farm tracks. This day is often seen as challenging but it is also one of the most rewarding of this section.



Town: ATM, Shops, all facilities
Meals: Breakfast, dinner

how to get there

» **DAY 6 – Ansiao to Condeixa A Nova (16km, 4h, +200m -150m)**

We leave Ansiao crossing a 17th century bridge Ponte da Cal and heading towards Netos. Then the landscape alternate between pine and eucalyptus woods, olive groves and small towns. We finally make our way to Condeixa a Nova.



Town: ATM, Shops, all facilities
Meals: Breakfast, dinner

» **DAY 7 – Condeixa A Nova to Coimbra (29km, 7h15, +350m -475m)**

The first half of the day runs through the countryside with lovely vineyards, olive groves and woodlands. As we approach the University city of Coimbra, the area becomes more populated and the last climb up of this section is towards alto de Cruz de Mourocos (Alt. 190m) overlooking Coimbra and the Rio Mondego valley. Coimbra is a nice and lively city, home of one of the oldest university in Europe!



Town: ATM, Internet, shops, all facilities
Meals: Breakfast

» **DAY 8 – Coimbra**

After breakfast, we bid you farewell.



Town: ATM, Internet, shops, all facilities
Meals: Breakfast

It is best to fly to Lisbon

Virtually every company fly to Lisbon. www.ana.pt

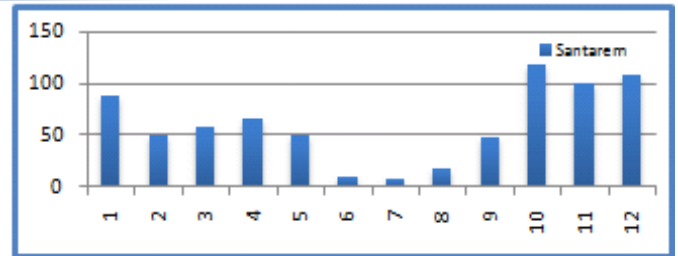
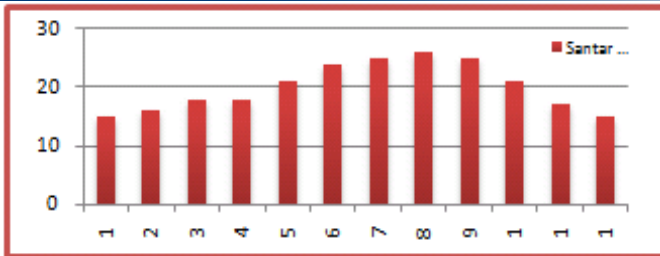
To the beginning of the trip: Santarem

From Lisbon Airport, bus to Lisbon bus station. Then, several bus companies run to Santarem (Approx. 1hr), many departures a day. www.rede-expressos.pt. There are also many train departures from Gare Oriente to Santarem all day long (Approx. 45min).www.cp.pt

Back home

To Lisbon Airport: by bus, take a bus to Lisbon bus station (Approx. 1.5hrs), regular departure all day long. www.rede-expressos.pt. There are also regular trains from Coimbra to Lisbon, all day long. www.cp.pt.

WEATHER



about the walking holiday

hotels

Our accommodation vary from 2* hotels to 3* hotels or equivalent depending on availability. All rooms are en-suite and accommodation is based on character, comfort and location. Our policy is to select the best available hotel in its category at any given time, to make sure your holiday is as valuable as possible. If an accommodation is not available, we may have to find an alternative that is as suitable as possible.

Luggage

We will transport your luggage from one hotel to the next. You only need to carry your backpack during the day!

Included

- Luggage transferred from hotel to hotel
- Rooms en-suite
- Half-Board during the hike
- Detailed Walking Notes
- Map
- Pilgrim passport

Not Included

- Flights
- Insurance (recommended)
- Drinks
- Dinners in Santarem and Coimbra
- Transfers from/to airport

prices & Options

Period	Price (€)	Single Room (€)	Solo departure (include single room) (€)	Picnic lunches (€)
High Season April, May, June, September	750	159	280	60
Mid Season July, August, October	680	136	252	
Low Season January, February, March, November, December	560	113	252	

Options

Transport To Santarem from Lisbon (€pp)	Extra Night in Santarem				Extra Night in Coimbra			
	2*Hotel B&B (€)		3* Hotel B&B (€)		2* Hotel B&B (€)		3* Hotel B&B (€)	
	Single	Double (pps)	Single	Double (pps)	Single	Double (pps)	Single	Double (pps)
For info on transfers for more passengers or from other airports, please ask us .	60	44	95	65	60	44	95	65
2-8 people €39pp								

[Top](#)