

## Portuguese way / Camino Portugues Section 1


[▶ BOOK NOW!](#)

### Walk from Lisbon to Santarem - 102 km

6 DAYS/5 NIGHTS



Half Board

HOTELS & GUESTHOUSES,  
EN-SUITE

year round

From €410

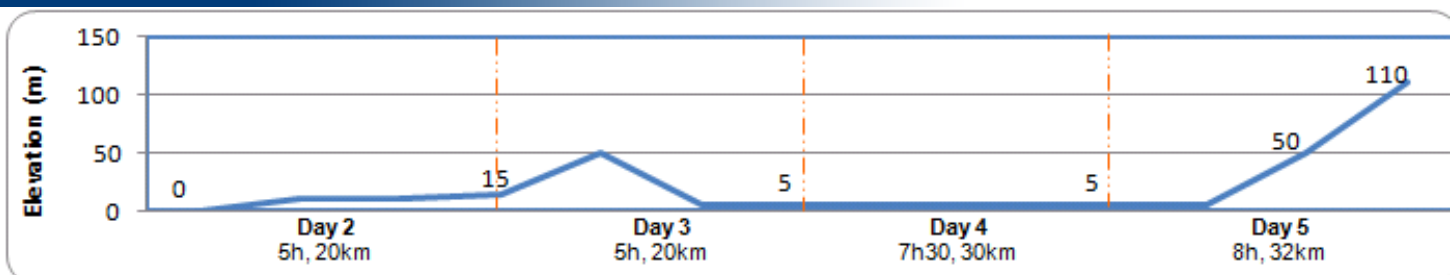
The Portuguese Way became very popular after the country gained its independence in the mid 12th century. Nowadays, some people claim the Portuguese Way offers one of the richest cultural and architectural heritages of the whole of the existing Caminos. The Portuguese way starts in Lisbon and crosses Lisboa, Alentejo and the Central and Northern regions of Portugal. It then enters Spain in Tui to continue North through Galicia and towards Santiago de Compostela!

The first section of the Portuguese way starts in the capital city of Portugal, Lisbon, and heads North to reach Santarem and its magnificent scenic views over the area. After the urban areas of the beginning, the route heads towards a rich agricultural area, often considered as "the garden of Portugal". On this leg, the Camino also coincides with the famous Caminho de Fatima and mainly follows the Tejo river valley. The flat landscape of the area makes it doable to anybody with an average level of fitness.


[maps](#)

### Portuguese Way

Use the navigation tools on the left to zoom-in

[Day By day](#)


#### » DAY 1 – Lisbon

Located on the Atlantic Ocean coast and on the banks of River Tejo, the westernmost capital city of Europe is a great place to visit and relax. It has both historical interests and the seaside buzz. Visitors can visit UNESCO World Heritage sites such as the Jeronimo Monastery Belem Tower amongst other interesting architectural buildings and squares. There are so many things to see and do in Lisbon that visitors have access to a wide array of different experiences.

#### » DAY 4 – Vila Franca de Xira to Azambuja (30km, 7h30)

Leaving Vila Franca de Xira, we continue our way through a region of where bullfighting and horse breeding are part of the daily life. The Camino continues parallel to the Tejo River before heading inland towards the pleasant town of Azambuja, another place famous for its "running of the bulls" yearly event in May.



**Town:** ATM, Shops, all facilities



**Town:** ATM, Shops, all facilities  
**Meals:** Breakfast, dinner

» **DAY 2 – Lisbon to Santa Iria de Azoia (20km, 5h, +15m)**

From Lisbon, the Portuguese Way of the Camino de Santiago also follows the famous Caminho de Fatima, all the way to Santarem. Leaving Lisbon is relatively easy as we follow river Tejo via Parque das Nacoes. . We then follow a farm track through a green valley and its hard to believe you are only few miles away from the heart of Lisbon! The short first walking day soon brings us to Santa Iria de Azoia where we spend the night.



**Town:** ATM, Shops, all facilities  
**Meals:** Breakfast, dinner

» **DAY 5 – Azambuja to Santarem (32km, 8h, +125m -20m)**

This last walking day brings us to the highest point of this section, at a mere 110 metres high, in Santarem, which is also the final stop over of our first stretch of the Portuguese Way. This is a very enjoyable walk as half of the day is spent through crop fields, fruit groves and vineyards.



**Town:** ATM, Shops, all facilities  
**Accommodation:** En-suite. 2\* accommodation or equivalent.  
**Meals:** Breakfast, dinner

» **DAY 6 – Santarem**

After breakfast, we bid you farewell.



**Town:** ATM, Shops, all facilities  
**Meals:** Breakfast, dinner

» **DAY 3 – Santa Iria de Azoia to Vila Franca de Xira (20km, 5h +35m -45m)**

Leaving this suburb of Lisbon, we start the day by a gentle climb up to then walk down to Povia de Santa Iria. The Camino then follow Rio Tejo mostly along a flat and busy national road towards the attractive and colorful Vila Franca de Xira, home of a famous bullfighting festival.



**Town:** ATM, Shops, all facilities  
**Accommodation:** En-suite. 2\* accommodation or equivalent. Your hotel is located in the centre of Lalin, 2 kilometre off trail.  
**Meals:** Breakfast, dinner

how to get there

### It is best to fly to Lisbon

Virtually every company fly to Lisbon. [www.ana.pt](http://www.ana.pt)

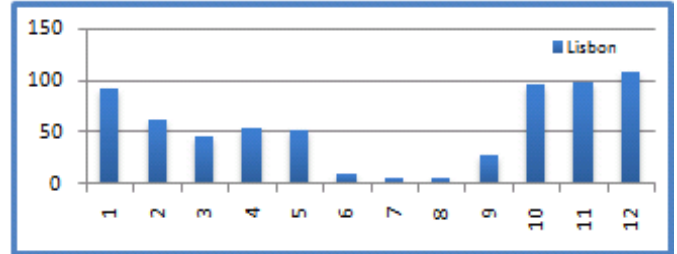
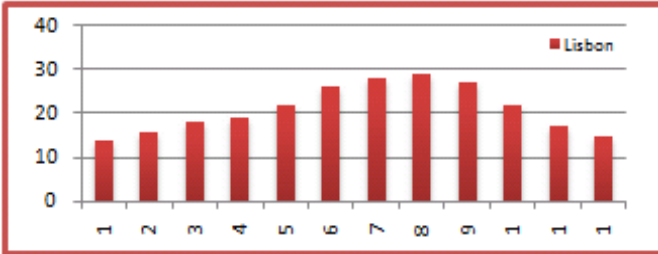
### To the beginning of the trip: Lisbon city centre

**From Lisbon Airport**, several urban bus routes can bring you to city centre. There are also shuttle buses. <http://www.aeroportoделisboa.com.pt/>

## Back home

**To Lisbon Airport:** by bus, take a bus to Lisbon bus station (Approx. 1hr), regular departure all day long. [www.rede-expressos.pt](http://www.rede-expressos.pt). There are also regular trains from Santarem to Lisbon, all day long [www.cp.pt](http://www.cp.pt)

## WEATHER



about the walking holiday

## hotels

Our accommodation vary from 2\* hotels to 3\* hotels or equivalent depending on availability. All rooms are en-suite and accommodation is based on character, comfort and location. Our policy is to select the best available hotel in its category at any given time, to make sure your holiday is as valuable as possible. If an accommodation is not available, we may have to find an alternative that is as suitable as possible.

## Luggage

We will transport your luggage from one hotel to the next. You only need to carry your backpack during the day!

## Included

- Luggage transferred from hotel to hotel
- Rooms en-suite
- Half-Board during the hike
- Detailed Walking Notes
- Map
- Pilgrim passport

## Not Included

- Flights
- Insurance (recommended)
- Drinks
- Dinner in Lisbon and Santarem
- Transfers from/to airport

## prices & Options

Period	Price (€)	Single Room (€)	Solo departure (include single room) (€)	Picnic lunches (€)
<b>High Season</b> April, May, June, September	550	121	200	40
<b>Mid Season</b> July, August, October	490	104	180	
<b>Low Season</b> January, February, March, November, December	410	86	180	

## Options

Transport To Lisbon hotel from airport - 1h (€pp)	Extra Night in Lisbon				Extra Night in Santarem				
	2* Hotel B&B (€)		3* Hotel B&B (€)		2* Hotel B&B (€)		3* Hotel B&B (€)		
	Single	Double (pps)	Single	Double (pps)	Single	Double (pps)	Single	Double (pps)	
For info on transfers for more passengers or from other airports, please <a href="#">ask us</a> .	60	44	95	65	60	44	95	65	
2-8 people €10pp									

[Top](#)