

LE PUY ROUTE Section 6



Walk from Aire-sur-l'Adour to Saint-Jean-Pied-de-Port – 152 km

[BOOK NOW!](#)

8 Days/7 nights



half Board

en-suite

available year round

From €560

The Via Podiensis or Le Puy Route was taken for the first time in 950 AD when the archbishop of Le Puy-en-Velay walked to the tomb of Saint James, opening the first non-Spanish route to Santiago. Along Le Puy Route, modern walkers enjoy various incredible landscapes and a rich medieval architectural heritage, as the Camino runs through some of the most typical rural French areas, and crossing towns and cities full of history.

Le Puy Route begins in Le Puy-en-Velay, a city set in a volcanic landscape, 130 kilometres South West of Lyon, in France. It continues through south-western France to the foothills of the Pyrenees, where this Camino joins up with the French Way.

From Aire-sur-l'Adour to Saint-Jean-Pied-de-Port, the 6th and final section of Le Puy Route will surely bewitch you. It starts in Les Landes and hikers quickly enter the French Basque Country. Charming French villages, beautiful forests, great scenic views, history: this section combines it all as you get closer to the Pyrenees, never far ahead in the distance. Finally, you reach their foothills in Saint-Jean-Pied-de-Port, both the end of Le Puy Route and the beginning of the French Way, en route to Santiago. This walk can be physically demanding and requires a reasonable level of fitness. However, it's a highly rewarding walk including numerous cultural highlights.

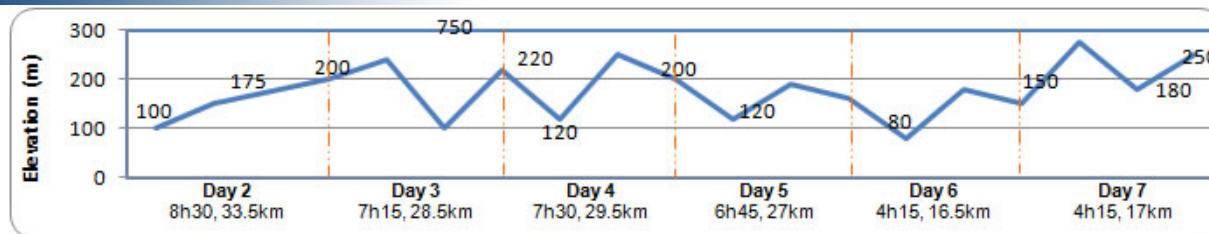
[maps](#)

[View Le Puy Route](#) in a larger map

French Way in Yellow

Use the navigation tools on the left to zoom-in

Day By day



» Day 1 - Aire-sur-l'Adour

The pretty town of Aire-sur-l'Adour, gateway to Les Landes département, is split between two parts: the lower section lays by the river Adour and holds home of the 12th century cathedral. On the upper town, Eglise de Sainte Quitterie is also a must-see. This medieval market town is the perfect start to feel the region's peaceful way of living.



Town: ATM, Shops, all facilities

» Day 2 – Aire-sur-l'Adour to Arzacq-Arraziguet (33.5km, 8h30, +200m -100m)

As the kick-off of the ultimate section of Le Puy Route, we spend our first day walking through les Landes département and its crop fields. Cultivated landscapes are dotted by hamlets with different ancient buildings, from well-conserved stone chapels to wash-houses. This first day is demanding, mostly because of its length rather than the difficulty of the terrain.



Town: ATM, Shops, all facilities
Meals: Breakfast, dinner

» Day 3 – Arzacq-Arraziguet to Arthez de Bearn (28.5km, 7h15, +260m -240m)

The beauty of the route today lies in the nice paths taken along hillside from where, from time to time, we can see a steeple pointing up to the sky, from the valley below. The route runs through the round topped hills, passing by numerous villages and as many nice old churches, such as in Luvigny, Larreule or Caubin.



Town: ATM, Shops, all facilities
Meals: Breakfast, dinner

» Day 4 – Arthez de Bearn to Navarrenx (29.5km, 7h30)

Today is a long day, going through the nice undulated countryside of Le Bearn area. After crossing over the river Gave de Pau, there are a few long uphill stretches which add some difficulty to this nice walk. One of the nicest rewards of the day comes after the effort, when arriving in Navarrenx, a beautiful fortified city which was the first bastionned city of France.

» Day 5 – Navarrenx to Saint-Palais (27km, 6h45)

Soon after Navarrenx, we find ourselves walking through the countryside and nice woodlands. Then we reach Lichos, marking the entrance of the Camino into the Basque Country. Passing via the village of Aroue, we continue our way up and down with the Pyrenees getting closer and closer. Finally, we reach Saint-Palais.



Town: ATM, Shops, all facilities
Accommodation: En-suite. 2* accommodation or equivalent.
Meals: Breakfast, dinner

» Day 6 – Saint-Palais to Larceveau (16.5km, 4h15)

This is another incredible walk, passing through few villages but offering beautiful views all way long. Walking through the peaceful countryside, we gradually make our way up to the chapel of Soyarce with its wonderful views over the Pyrenees. We pass the typical village of Ostabat and continue to Larceveau.



Town: ATM, Shops, all facilities
Meals: Breakfast, dinner

» Day 7 – Larceveau to Saint-Jean-Pied-de-Port (17km, 4h15)

The last day of the final section of Le Puy Route runs through the hilly and countryside of the Basque Country, with its grazing sheep and red roofed houses. The Camino goes up and down all day long, offering nice views over the green countryside and passing through villages with typical Basque names like Bastida Xoko, Utxiat or Bussunaritz. The journey ends up in the beautiful medieval Saint-Jean-Pied-de-Port, at the foothills of the Pyrenees and starting point of the French Way to Santiago.



Town: ATM, Shops, all facilities
Meals: Breakfast, dinner

» Day 8 – Saint-Jean-Pied-de-Port

After breakfast, we bid you farewell. If you wish to continue and experience crossing over the Pyrenees on the Camino, have a look at our French Way, Section 1. You can also stay overnight in Saint-Jean-Pied-de-Port.

Town: ATM, Internet, shops, all facilities
Meal: Breakfast



Town: ATM, Shops, all facilities

Meals: Breakfast, dinner

how to get there

Pau is the nearest airport to Aire-sur-l'Adour. However, it is also possible to fly to Bordeaux. You can also fly back from Biarritz airport (we do not advise flying to there though as it is then a complicated journey to reach the beginning of the trip).

It is best to fly to Pau

Ryanair fly direct to Pau from the UK. They operate year round from London and Bristol. www.ryanair.com

It is also possible to fly to **Bordeaux, Biarritz and Toulouse.**

To the beginning of the trip: Aire-sur-l'Adour

From Pau: Train to Tarbes train station (Approx. 45min). Then SNCF "T.E.R" bus to Aire-sur-l'Adour by bus (Approx. 1h15). Several departures a day. www.ter-sncf.com/aquitaine/index.asp

From Bordeaux: From Bordeaux, train to Mont-de-Marsan (Approx. 1h20). Then SNCF "T.E.R" bus to Aire-sur-l'Adour (Approx. 45 min). Several departures a day. www.ter-sncf.com/aquitaine/index.asp

From Toulouse: Bus to Aire-sur-l'Adour (Approx. 3h30). Several departures a day. www.voyages-sncf.com

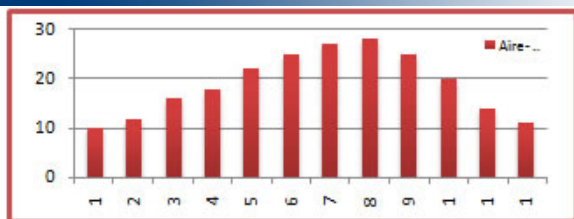
Back home from Saint-Jean-Pied-de-Port

To Pau Airport: Train to Dax (Approx. 30min). Then train to Pau (Approx. 1h). www.ter-sncf.com/aquitaine/index.asp. Taxi to Airport (Approx. 20min & 20€).

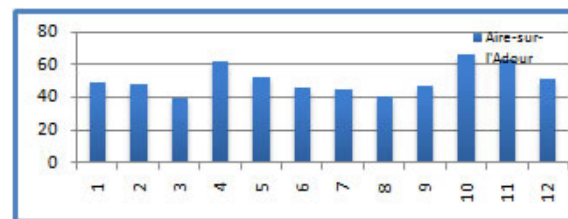
To Biarritz Airport: Train to Bayonne (Approx. 1h15). Then train to Biarritz (Approx. 10min). Then STAB bus line 6 to Biarritz Airport (Approx. 30min).

To Bordeaux Airport: Train to Bayonne (Approx. 1h15). Then, train to Bordeaux train station (Approx. 1h45). www.ter-sncf.com/aquitaine/index.asp. Then Jet'Bus to Bordeaux Airport (Approx. 45min), departure every 45min.

WEATHER



Average temperatures



Average rainfall

about the cycling holiday

accommodation

Our accommodation vary from 2* hotels to 3* hotels or equivalent depending on availability, except Day 2 and Day 3 where the standard is 1*. All rooms are en-suite and accommodation is based on character, comfort and location. Our policy is to select the best available hotel in its category at any given time, to make sure your holiday is as valuable as possible. If an accommodation is not available, we may have to find an alternative that is as suitable as possible.

Luggage

We will transport your luggage from one hotel to the next. You only need to carry your backpack during the day!

Included

- Luggage transferred from hotel to hotel
- En-suite Rooms except Day 3 in Arthez (1 bathroom for 2 rooms)
- Half-board during the cycle
- Detailed Walking Notes
- Map
- Pilgrim passport

Not Included

- Flights
- Insurance (recommended)
- Drinks
- Dinners in Aire-sur-l'Adour and Saint-Jean-Pied-de-Port
- Transfer from/to airport

prices & Options

Period	Price (€)	Single Room (€)	Picnic lunches (€)
High Season April, May, June, September	750	175	60
Mid Season July, August, October	680	150	
Low Season January, February, March, November, December	560	124	

Options

Extra Night in Aire-sur-l'Adour (€)		Extra Night in Saint-jean-Pied-de-Port (€)				Transport to Aire-Sur L'Adour from Biarritz Airport (€pp) For info on transfers for more passengers or from other airports, please ask us . 2-8 people €75pp
Single	Double (pps)	2*Hotel B&B(€)		3*Hotel B&B (€)		
		Single	Double (pps)	Single	Double (pps)	
60	44	60	44	95	65	

[Top](#)