

LE PUY ROUTE Section 5



Walk from Lectoure to Aire-sur-l'Adour – 114 km

[▶ BOOK NOW!](#)

7 Days/6 nights



half Board

en-suite

available year round

From €490

The Via Podiensis or Le Puy Route was taken for the first time in 950 AD when the archbishop of Le Puy-en-Velay walked to the tomb of Saint James, opening the first non-Spanish route to Santiago. Along Le Puy Route, modern walkers enjoy various incredible landscapes and a rich medieval architectural heritage, as the Camino runs through some of the most typical rural French areas, and crossing towns and cities full of history.

Le Puy Route begins in Le Puy-en-Velay, a city set in a volcanic landscape, 130 kilometres South West of Lyon, in France. It continues through south-western France to the foothills of the Pyrenees, where this Camino joins up with the French Way.

From Lectoure to Aire-sur-l'Adour, the 5th section of Le Puy route brings us deep into lands of tradition and undulated cultivated landscapes. Here, the Camino starts in Le Gers département, both home to foie gras and to vineyards producing the famous Armagnac brandy. Approaching Aire-sur-l'Adour, the landscape gradually changes into crop fields and pinewoods as we enter Les Landes area.

Architectural heritage and history are also part of the journey, almost everywhere along the Camino! We have split the walking days so short walks alternate with more demanding ones, so anybody with an average level of fitness can complete it.

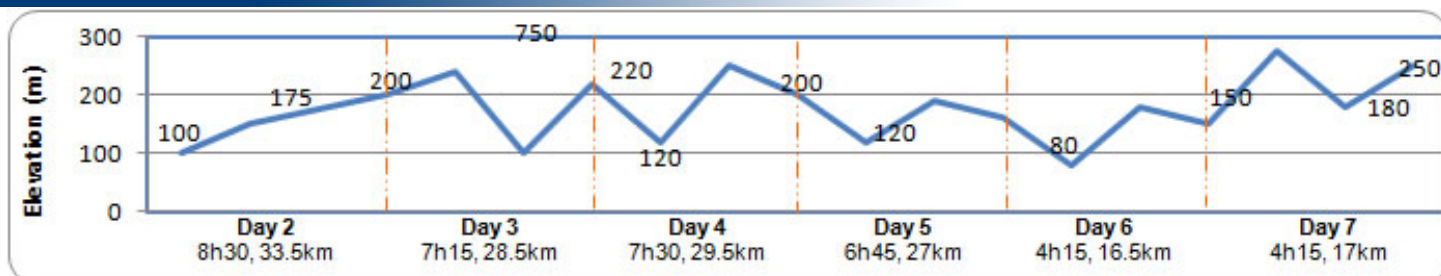
[maps](#)


View [Le Puy Route](#) in a larger map

French Way in Yellow

Use the navigation tools on the left to zoom-in

Day By day



» Day 1 - Lectoure

Lectoure is a pretty fortified town that keeps history alive and where visitors can take time to visit the old impressive cathedral, the castle of the Earls of Armagnac, the 18th tannery, the archeological museum and more. Visitors can also treat themselves in the natural spas or simply enjoy strolling around the narrow streets of this market town set in the Gers valley .



Town: ATM, Shops, all facilities

» Day 2 – Lectoure to La Romieu (19km, 4h45, +250m -150m)

Leaving Lectoure, we head down to river Le Gers which we cross over before continuing through the countryside. We then reach Marsolan and its Roman church. It is then a very enjoyable stroll between woodlands and open countryside until we reach La Romieu and its UNESCO World Heritage collegial church.



Town: ATM, Shops, all facilities
Meals: Breakfast, dinner

» Day 3 – La Romieu to Montreal du Gers (33km, 8h30, +150m -250m)

Today is a long day and while the first half is mainly spent on dirt tracks through the gently undulated country dotted with lakes and streams, the second half brings history into our day. Indeed, passing by Condom and Larresingle (known as "the little Carcassonne"), lovers of old stone buildings will be conquered. Finally, we arrive in Montreal du Gers and its timbering houses, proud to be the biggest vineyard of Armagnac, the famous brandy.



Town: ATM, Shops, all facilities
Meals: Breakfast, dinner

» Day 4 – Montreal du Gers to Eauze (16km, 4h, +100m -80m)

From Montreal du Gers, Le Puy Route heads South towards Eauze. The first 8 kilometres are spent between country and vines and the first hamlet we cross is Lamothe. The Camino then runs through the quiet vineyards and countryside of Armagnac. The walk ends up on Place d'Armagnac, in Eauze, another beautiful village and official capital city of Armagnac since 1802!



Town: ATM, Shops, all facilities
Meals: Breakfast, dinner

» Day 5 – Eauze to Nogaro (20km, 5h +90m -120m)

We continue through the vineyards of Armagnac to reach the pretty town of Manciet, an historical point on the Camino as this is where, in the Middle Ages, Pilgrims coming from Auch met those walking on Le Puy Route. The route then runs through the countryside and at the end of the day, we arrive in Nogaro.



Town: ATM, Shops, all facilities
Meals: Breakfast, dinner

» Day 6 – Nogaro to Aire-sur-l'Adour (30km, 7h30 +120m -100m)

Today, the Landes' influence is more and more obvious as vines become rarer and pine trees start to appear. We start our walking day mainly walking through cereal fields. The day is also punctuated with some of the prettiest villages and hamlets of the entire section with the like of Lanne-Soubiran, and Barcelonne-du-Gers. At the end of the walk, we enter Les Landes département in another charming town rich in history: Aire-sur-l'Adour.



Town: ATM, Shops, all facilities
Meals: Breakfast, dinner

» Day 7 – Aire-sur-l'Adour

After breakfast, we bid you farewell.

Town: ATM, shops, all facilities**Meal:** Breakfast**how to get there**

Toulouse is the nearest airport to Aire-sur-l'Adour. However, it is also possible to fly to Bordeaux.

To France: Toulouse or Bordeaux

To Toulouse: BA, Aer Lingus and Easyjet fly to Bordeaux from UK & Ireland. Other companies fly from major cities in Europe. <http://english.toulouse.aeroport.fr/US/compagnies.asp>

To Bordeaux: BA, Aer Lingus and Easyjet fly to Bordeaux from UK & Ireland. Other companies fly from major cities in Europe. <http://www.bordeaux.aeroport.fr/en/airline-companies>

To the beginning of the trip: Lectoure

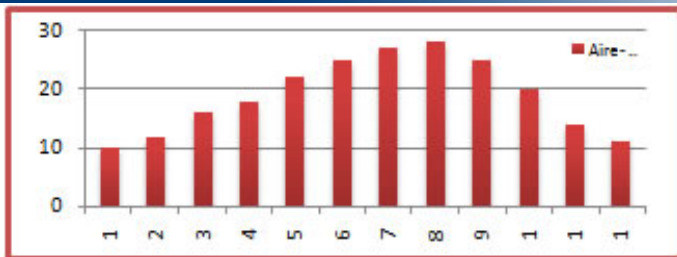
From Toulouse: Train to Agen (Approx. 1hr). Then bus to Lectoure (Approx. 45min). Several departures a day. www.ter-sncf.com/aquitaine/index.asp

From Bordeaux: Train to Agen (Approx. 15min) then SNCF "T.E.R" bus to Lectoure (Approx. 45min). Several departures a day. www.ter-sncf.com/aquitaine/index.asp

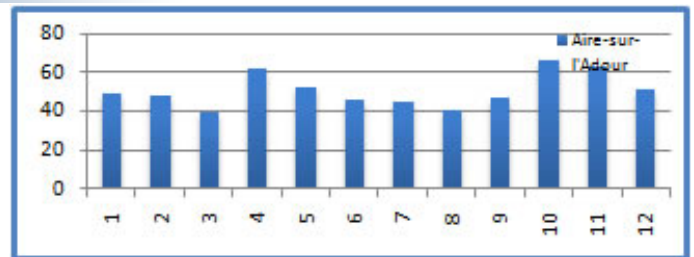
Back home from Aire-sur-l'Adour Back home from Lectoure

To Bordeaux: SNCF "T.E.R" bus to Mont-de-Marsan train station (Approx. 45min). Then train to Bordeaux (Approx. 1h20). Several departures a day. www.ter-sncf.com/aquitaine/index.asp

To Toulouse: Bus to Toulouse (Approx. 3h30). Bus to Aire-sur-l'Adour (Approx. 3h30). Several departures a day. www.voyages-sncf.com

WEATHER

Average temperatures



Average rainfall

about the cycling holiday**accomodation**

Our accommodation vary from 2* hotels to 3* hotels or equivalent depending on availability. All rooms are en-suite and accommodation is based on character, comfort and location. Our policy is to select the best available hotel in its category at any given time, to make sure your holiday is as valuable as possible. If an accommodation is not available, we may have to find an alternative that is as suitable as possible.

Luggage

We will transport your luggage from one hotel to the next. You only need to carry your backpack during the day!

Included**Not Included**

- Luggage transferred from hotel to hotel
- En-suite Rooms
- Half-board during the cycle
- Detailed Walking Notes
- Map
- Pilgrim passport
- Flights
- Insurance (recommended)
- Drinks
- Dinners in Lectoure and Aire-sur-l'Adour
- Transfer from/to airport

prices & Options

Period	Price (€)	Single Room (€)	Picnic lunches (€)
High Season April, May, June, September	650	154	50
Mid Season July, August, October	590	132	
Low Season January, February, March, November, December	490	110	

Options

Extra Night in Lectoure (€)		Extra Night in Aire-sur-l'Adour (€)		Transport to Lectoure from Toulouse (€pp)	
Single	Double (pps)	Single	Double (pps)		
60	44	60	44	For info on transfers for more passengers or from other airports, please ask us .	
				2-8 people €40pp	

[Top](#)