

## LE PUY ROUTE Section 2



## Walk from Aumont-Aubrac to Conques – 72 km

[▶ BOOK NOW!](#)

6 Days/5 nights



half Board

en-suite

available year round

From €490

The Via Podiensis or Le Puy Route was taken for the first time in 950 AD when the archbishop of Le Puy-en-Velay walked to the tomb of Saint James, opening the first non-Spanish route to Santiago. Along Le Puy Route, modern walkers enjoy various incredible landscapes and a rich medieval architectural heritage, as the Camino runs through some of the most typical rural French areas, and crossing towns and cities full of history.

Le Puy Route begins in Le Puy-en-Velay, a city set in a volcanic landscape, 130 kilometres South West of Lyon, in France. It continues through south-western France to the foothills of the Pyrenees, where this Camino joins up with the French Way.

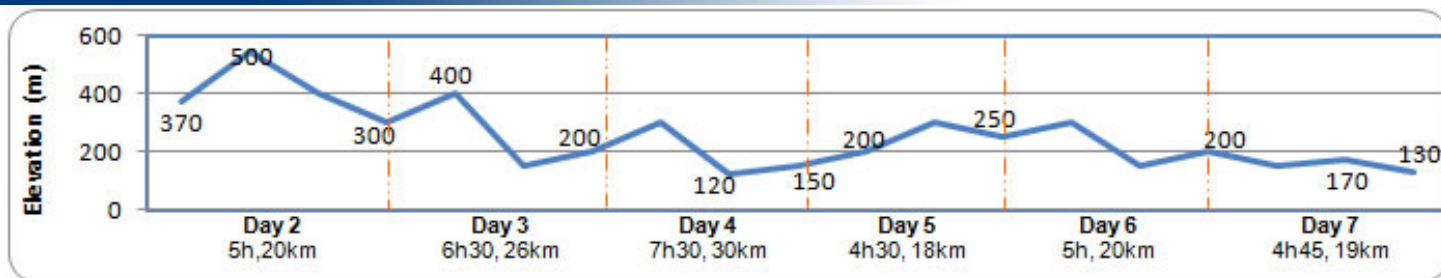
On our 2nd section of Le Puy Route, the Camino runs between Aumont-Aubrac and Conques. The area the Camino crosses is almost legendary on Le Puy Route as it goes through the austere high Aubrac plateau, an isolated landscape, home to green and sleepy volcano lands. The second half of the walking holiday enters the as nice but more lively Lot valley. The many ups and downs during the walk make it demanding but we have split the days in short enough stages so it is feasible by anybody with a reasonable level of fitness. It is also a high rewarding section, with stunning views and beautiful villages!


[maps](#)
View [Le Puy Route](#) in a larger map

### French Way in Yellow

Use the navigation tools on the left to zoom-in

#### Day By day



### » Day 1 - Day 1 - Aumont-Aubrac

Aumont-Aubrac is a typical village of the area, and the transition between the round topped hills of Allier département and gateway to the high plateau of mythic Aubrac and its endless austere and inspiring volcano lands, part of the Massif Central. The town has always been strongly linked to the Camino, as back in the medieval times, this is where pilgrims coming from the East on Le Puy Route rested before facing the upcoming stark and isolated lands of Aubrac.



**Town:** ATM, Shops, all facilities

### » Day 2 – Aumont-Aubrac to Nasbinals (27km, 7h, +250m -120m)

As we leave Aumont-Aubrac, we start our way towards the inspiring Aubrac high plateau, walking on walled tracks, with endless flat grassland surrounding us. Typical Aubrac cows grazing there bring life between sleepy villages and farmhouses. The walk ends up in Nasbinals, charming village with a Roman church.



**Town:** ATM, Shops, all facilities  
**Meals:** Breakfast, dinner

### » Day 3 – Nasbinals to Saint-Chély d'Aubrac (17km, 4h30, +230m -620m)

Today, the Camino reaches one of its highest points as we climb up to 1370 metres before walking down to the historic hamlet of Aubrac, a legendary stage on Le Puy Route. The whole walk between Nasbinals to Saint-Chély d'Aubrac is listed at the UNESCO World Heritage sites.



**Town:** ATM, Shops, all facilities  
**Meals:** Breakfast, dinner

### » Day 4 – Saint-Chély d'Aubrac to Espalion (22km, 5h30, +150m -600m)

Soon after crossing over Saint-Chély bridge, we leave the typical sceneries of the Aubrac to enter chestnut and beechwoods. After this, we notice a more populated area and we reach medieval Saint-Come-d'Olt, one of the "nicest villages of France". It is then a nice stroll, climbing up a bit before getting down to the pretty village of Espalion, on the banks of the Lot river.



**Town:** ATM, Shops, all facilities  
**Meals:** Breakfast, dinner

### » Day 5 – Espalion to Golinhac (27km, 7h, +550m -250m)

Along the walk, the area holds home to well preserved treasures from the past, part of UNESCO World Heritage site list. First, we head to the beautiful Roman church of Bessuéjols and its upper chapel hidden in the 11th century steeple. Then, we reach Estaing, a medieval village topped by its impressive castle. We then continue along the Lot river, before climbing up to Montégut. The camino then runs through woods and countryside before reaching yet another pretty village: Golinhac



**Town:** ATM, Shops, all facilities  
**Meals:** Breakfast

### » Day 6 – Golinhac to Conques (21km, 5h15, -550m, +270m)

Countryside and peaceful woodlands will be our decor all day long during this easy walk. We have some time to wander around the charming village of Espeyrac on the bank of the river and to admire the old castle in Sénergues. Finally, we arrive in Conques, one of the nicest town on the whole Le Puy Route!



**Town:** ATM, shops, all facilities  
**Meal:** Breakfast

### » Day 7 – Conques

After breakfast, we bid you farewell.

**Town:** ATM, shops, all facilities

**Meal:** Breakfast

## how to get there

**Rodez is the best located airport both to get to Aumont-Aubrac and to get back home from Conques. It is also possible to fly to Lyon and then fly back from Rodez airport. lay. Rodez airport is also an option for flying back from Aumont-Aubrac.**

**To France:** To Rodez or Lyon

**To Rodez:** Ryanair fly from Dublin and London. [www.ryanair.com](http://www.ryanair.com). Air France also fly from Paris. [www.airfrance.fr](http://www.airfrance.fr)

**Lyon:** Virtually, every companies fly to Lyon. [www.lyon.aeroport.fr](http://www.lyon.aeroport.fr)

## To the beginning of the trip: Aumont-Aubrac

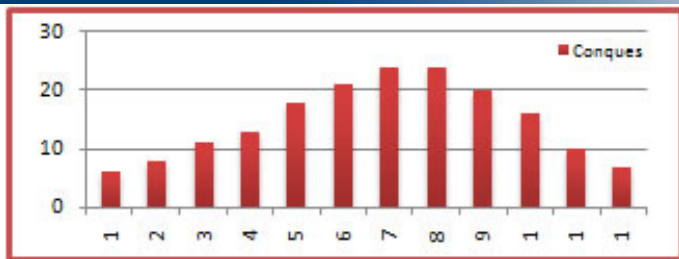
**From Rodez:** SNCF bus to Severac le Chateau (Approx. 20min). Then train to Aumont-Aubrac (Approx. 1hr15). [www.voyages-sncf.com](http://www.voyages-sncf.com)

**From Lyon:** Train to Clermont Ferrand (Approx 2h30). Then train to Aumont-Aubrac (Approx. 1h45). [www.voyages-sncf.com](http://www.voyages-sncf.com)

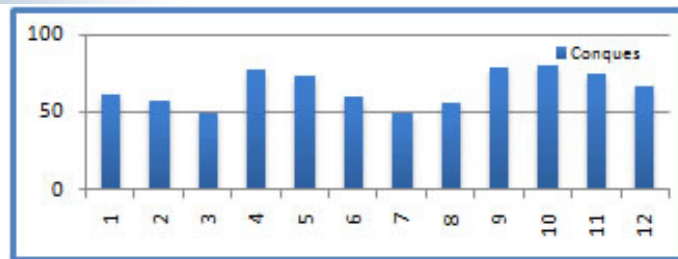
## Back home from Conques

**To Rodez:** Bus from Conques on mornings, Monday to Friday (Approx. 7€). Or taxi to Rodez Airport (Approx. €50)

## WEATHER



Average temperatures



Average rainfall

## about the cycling holiday

### accomodation

Our accommodation vary from 2\* hotels to 3\* hotels or equivalent depending on availability. All rooms are en-suite and accommodation is based on character, comfort and location. Our policy is to select the best available hotel in its category at any given time, to make sure your holiday is as valuable as possible. If an accommodation is not available, we may have to find an alternative that is as suitable as possible.

### Luggage

We will transport your luggage from one hotel to the next. You only need to carry your backpack during the day!

### Included

### Not Included

- Luggage transferred from hotel to hotel
- En-suite Rooms
- Half-board during the cycle
- Detailed Walking Notes
- Map
- Pilgrim passport
- Flights
- Insurance (recommended)
- Drinks
- Dinners in Aumont-Aubrac and Conques
- Transfer from/to airport

## prices &amp; Options

| Period  | Price (€) | Single Room (€) | Picnic lunches (€) |
|---|-----------|-----------------|--------------------|
| <b>High Season</b><br>April, May, June, September                 | 650       | 154             | 50                 |
| <b>Mid Season</b><br>July, August, October                        | 590       | 132             |                    |
| <b>Low Season</b><br>January, February, March, November, December | 490       | 110             |                    |

## Options

| Extra Night in Aumont-Aubrac (€) |              | Extra Night in Conques (€) |              | <b>Transport<br/>To Aumont Aubrac from Rodez airport<br/>(€pp)</b> |
|----------------------------------|--------------|----------------------------|--------------|--|
| Single                           | Double (pps) | Single                     | Double (pps) |  |
| 60                               | 44           | 60                         | 44           |  |

[Top](#)