

LE PUY ROUTE Section 1



Walk from Le Puy-en-Velay to Aumont-Aubrac – 89 km

[▶ BOOK NOW!](#)

6 Days/5 nights



half Board

en-suite

available year round

From €410

The Via Podiensis or Le Puy Route was taken for the first time in 950 AD when the archbishop of Le Puy-en-Velay walked to the tomb of Saint James, opening the first non-Spanish route to Santiago. Along Le Puy Route, modern walkers enjoy various incredible landscapes and a rich medieval architectural heritage, as the Camino runs through some of the most typical rural French areas, and crossing towns and cities full of history.

Le Puy Route begins in Le Puy-en-Velay, a city set in a volcanic landscape, 130 kilometres South West of Lyon, in France. It continues through south-western France to the foothills of the Pyrenees, where this Camino joins up with the French Way.

For the 1st section, Le Puy Route links the historical Le Puy-en-Velay to Aumont-Aubrac. Starting in Auvergne, famous for its green and sleepy volcanoes, the Camino runs through green yet rocky undulated landscapes. This leg may even seem to be more inhabited by grazing sheep and cattle than by men if it was not for its numerous medieval chapels, churches, towers and well-preserved towns that modern pilgrims encounter every day. The mountainous landscape make this section challenging but we have split the stages so they are of reasonable length and feasible by anybody with a reasonable level of fitness. Nature lovers, get ready: this is the perfect walking holiday for you!

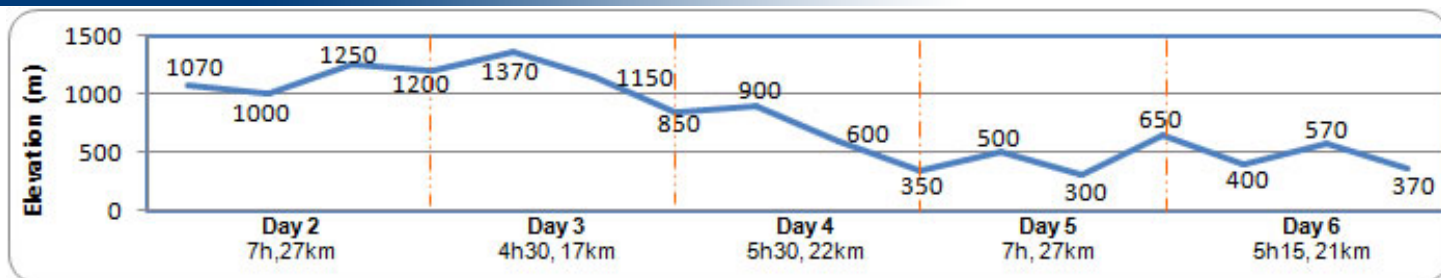

[maps](#)

View [Le Puy Route](#) in a larger map

French Way in Yellow

Use the navigation tools on the left to zoom-in

Day By day



» Day 1 - Le Puy-en-Velay

Le Puy-en-Velay is the historical starting point of Le Puy Route, and this is where archbishop Gothescalk departed from, in 950 AD, being the first ever pilgrim to reach the tomb of the apostol in Santiago de Compostela. Nowadays, UNESCO World Heritage sites in the city remind us of this time. Le Puy-en-Velay has always been a high sanctuary city as it also holds home to the mysterious Black Virgin, which has drawn pilgrims from all over Europe since the Middle Ages. The interest of Le-Puy-en-Velay is historical and cultural for sure, but the city also worth the visit for its picturesque location. Indeed, set between the Auvergne sleepy volcanoes and the Rhone Alpes valley, the lively old city charms visitors with the great views it offers over the surrounding low mountains. And there is much more to discover about this unique place!

Image will not render

Town: ATM, Shops, all facilities

» Day 2 – Le Puy-en-Velay to Saint- Privat d'Allier (23.5km, 6h15, +600m -350m)

Starting at Notre-Dame du Puy Cathedral, modern pilgrims feel a certain emotion when walking down the stairs that have been the starting point of thousands of pilgrims en route to Santiago for the last millenium. The day is spent through the rounded green mountains of the Velay massif, offering beautiful sceneries all day long, before reaching Saint-Privat d'Allier.



Town: ATM, Shops, all facilities
Meals: Breakfast, dinner

» Day 3 – Saint-Privat d'Allier to Saugues (19km, 5h30, +650m -600m)

This is a short enough walk but the consequent ascents and descents make it the most demanding stage of this first section. The rewarding side of it, is that it offers wonderful views over the Velay massif and the Gévaudan plateau, and we also pass through picturesque villages and hamlets before arriving in Saugues.



Town: ATM, Shops, all facilities
Meals: Breakfast, dinner

» Day 4 – Saugues to Les Faux (26.5km, 7h, +450m -350m)

Today, we leave Saugues and its Tour des Anglais to continue up to reach Le Sauvage, a farm domain perched on top of a hill and dating back to the times of the Templars. The Camino then continues to enter La Lozère département at the Saint-Roch chapel and we conclude our day in Les Faux.



Town: ATM, Shops, all facilities
Meals: Breakfast, dinner

» Day 5 – Les Faux to Aumont-Aubrac (20km, 5h, +150m -200m)

From Les Faux, we reach Saint-Alban sur Limagnole and its Roman Church. Then, it is a steep climb up to Grazières-Mages. We then start our way down to Les Estrets through peaceful wood and farmlands. Finally, we reach Aumont-Aubrac, gateway to the mythic Aubrac high plateaux.



Town: ATM, Shops, all facilities
Meals: Breakfast

» Day 6 – Aumont-Aubrac

After breakfast, we bid you farewell.



Town: ATM, shops, all facilities
Meal: Breakfast

how to get there

There are several options to fly to France with accessibility to Le Puy-en-Velay. Rodez airport is also an option for flying back from Aumont-Aubrac.

To France: To Lyon or Paris

To Lyon: Virtually, every companies fly to Lyon. www.lyon.aeroport.fr

To Paris Only: Virtually, every companies fly to Paris. www.aeroportsdeparis.fr

To the beginning of the trip: Le Puy-en-Velay

From Lyon: Train to Le Puy-en-Velay (Approx. 2h30). www.voyages-sncf.com

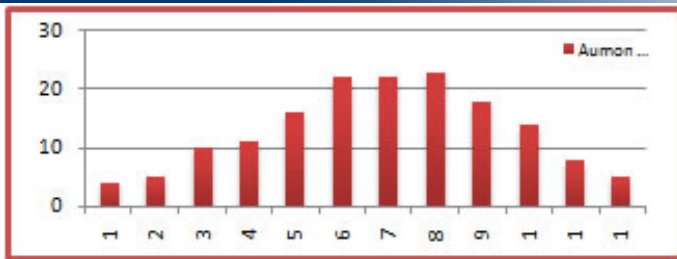
From Paris Only: Hexair fly from Paris Orly to Le Puy/Loudes airport, from Monday to Friday, twice a day, year round. <http://www.hexair.com/vol-regulier-le-puy-en-velay-paris>

Back home from Aumont-Aubrac

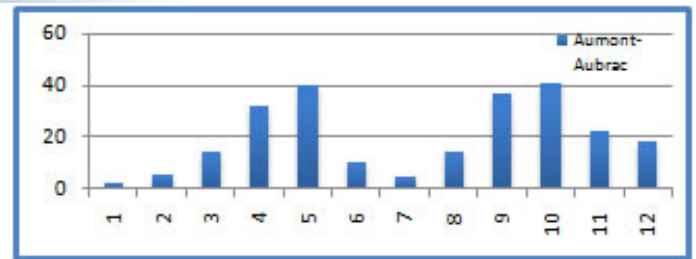
To Lyon: Train to Clermont-Ferrand (Approx. 2hrs). Then train to Lyon (Approx. 1h45). www.voyages-sncf.com

To Rodez: Train to Severac le Chateau (Approx. 1h15). Then SNCF bus to Rodez (Approx. 20min). www.voyages-sncf.com

WEATHER



Average temperatures



Average rainfall

about the cycling holiday

accomodation

Our accommodation vary from 2* hotels to 3* hotels or equivalent depending on availability. All rooms are en-suite and accommodation is based on character, comfort and location. Our policy is to select the best available hotel in its category at any given time, to make sure your holiday is as valuable as possible. If an accommodation is not available, we may have to find an alternative that is as suitable as possible.

Luggage

We will transport your luggage from one hotel to the next. You only need to carry your backpack during the day!

Included

- Luggage transferred from hotel to hotel
- En-suite Rooms
- Half-board during the cycle
- Detailed Walking Notes
- Map
- Pilgrim passport

Not Included

- Flights
- Insurance (recommended)
- Drinks
- Dinner in Le Puy en Velay and Aumont-Aubrac
- Transfer from/to airport

prices & Options

Period	Price (€)	Single Room (€)	Picnic lunches (€)
High Season April, May, June, September	550	134	40
Mid Season July, August, October	500	114	
Low Season January, February, March, November, December	410	95	

Options

Extra Night in Le Puy-en-Velay (€)		Extra Night in Aumont-Aubrac (€)		Transport To Le Puy En Velay from Lyon (€pp)
Single	Double (pps)	Single	Double (pps)	
60	44	60	44	

[Top](#)