

French way / Camino Frances Section 7


[▶ BOOK NOW!](#)

Walk From Ponferrada to Sarria - 93km

6 Days/5 Nights



Half Board

hotels en-suite

year round

From €390

This Walking Holiday explores the seventh section of the Camino Frances / French Way, the most traditional of all the pilgrims' ways to Santiago de Compostela and the best known internationally.

Starting in the mountain-hugging town of Ponferrada and finishing in Sarria, a bustling market town, this Camino crosses the magnificent O'Cebreiro Mountains before winding down to a more gentle terrain.

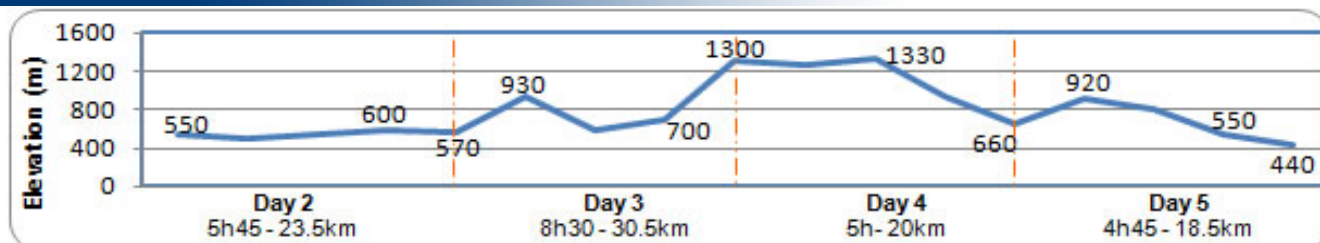
Everyday, during the walk, you are guaranteed a high level of comfort and gastronomy. The Camino is clearly marked with the "Scallop Shell" showing you the way. This walk can be physically demanding and requires a reasonable level of fitness. However, it's a highly rewarding walk that includes numerous cultural highlights.

[maps](#)


French Way in Yellow

Use the navigation tools on the left to zoom-in

Day By day



» Day 1 - Ponferrada

You will be pre-booked in a traditional hotel in the heart of the town.

Town: ATM, shops.

Accommodation: A charming 3* hotel, 200m from the historical center, en-suite.



» DAY 2 – Ponferrada to Villafranca del Bierzo (6h, 23km, +100m, -90m)

Today you will cross the region of Bierzo, a sunken plain nestled within a ring of mountains. It is a fertile land, whose agreeable climate allows the cultivation of many types of fruits and vegetables. In Villafranca, don't miss the garden of the "Iglesia de Santiago".

» DAY 4 – O Cebreiro to Triacastela (5h30, 21km, +100m -300m)

From O Cebreiro the trail passes through the "Sierra de Ranadoiro" (Ranadoiro Mountains) and, after crossing the Alto do Poio, it descends into the valley to the village of Triacastela.



Town: Limited facilities.

Hotel: 1* family-run hotel in the centre of the village, en-suite.
Meal: Half Board

» DAY 5 – Triacastela to Sarria (5h30, 21km, +80m -830m)

Of the two Camino options, the "San Xil" Camino offers scenery that will uplift your spirits and encourage you on your way. It has many



Town: ATM, shops, all facilities.
Hotel: 2* family-run hotel, en-suite.
Meal: Half Board

» DAY 3 – Villafranca del Bierzo to O Cebreiro (7h, 28km, +900m -30m)

Prepare for a challenging day with an ascent of 1000m. You will pass through the narrow valley of the river Valcace before tackling the ascent of O Cebreiro. Situated between the ranges of "Los Ancares" and "La Sierra do Courel", this stage involves a steep climb in the course of only a few kilometers.



Town: ATM, shops, all facilities.
Hotel: 1* Hotel in the centre of the village, en-suite.
Meal: Half Board

how to get there

"Corredoiras" (narrow forest routes) with paved pathways that cut through typical Galician oak woods. If you wish to visit Samos, you will pass through the narrow valley of the river Ouribio, mostly following the road.



Town: ATM, shops, internet.
Hotel: 3* hotel 100m from the historical centre, en-suite
Meal: Breakfast

» DAY 6 – Sarria, end of the walking holiday

After breakfast we bid you farewell.



Meal: Breakfast

It is best to fly to Santiago de Compostela or to Madrid / More info: <http://www.spanish-airport-guide.com/>

1 - Fly to Santiago de Compostela, Spain

[Ryanair](#) and [Iberia/BA](#) fly direct to Santiago de Compostela from the UK. Ryanair fly from Stansted, Nottingham East Midlands and Liverpool and [Aer Lingus](#) operates from Dublin.

Many of the flights that arrive at the airport are from internal Spanish destinations. Iberia and [Spanair](#) offer the best selection of flights and you can fly to and from Santiago De Compostela from: Frankfurt, Paris and Rome and Barcelona, Bilbao, Fuerteventura, Gran Canaria, Lanzarote, Madrid, Malaga, Palma, Seville, Tenerife and Valencia.

2 - Fly to Madrid, Spain

Virtually every company flies to Madrid

Spanish national company: www.iberia.com

Spanish low-cost: www.spanair.com

To start your walking holiday: Ponferrada

1 - From Santiago.

- Take a shuttle bus to the bus station. Then a direct bus to Ponferrada (3-4hrs). See: <http://www.alsa.com>

- Take a train to Ponferrada. Takes 4hrs, 2 per day. See: <http://horarios.renfe.es/hir/ingles.html>

2 - From Madrid. Train (5-6hrs)

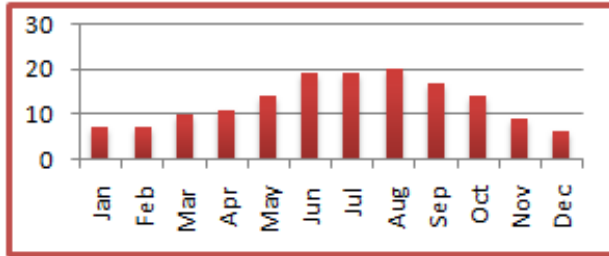
See: <http://horarios.renfe.es/hir/ingles.html>

Back home, from Sarria

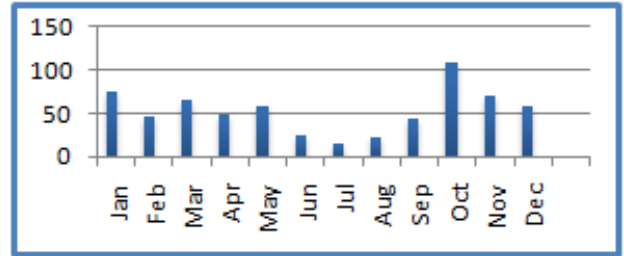
- 1 - Bus to Lugo (30mins) and then to Santiago (1hr45), direct to the airport.
- 2 - Train to Madrid (8hrs)

Spanish train information and booking: <http://horarios.renfe.es/hir/ingles.html>

WEATHER



Average temperatures



Average rainfall

about the walking holiday

hotels

These hotels and guesthouses have been carefully selected for their comfort, location, friendliness and character, and are subject to availability. If the hotel described is not available we provide an alternative with the same standard of comfort & price.

Luggage

We will transport your luggage from one hotel to the next. You only need to carry your backpack during the day!

Included

- Luggage transferred from hotel to hotel
- Rooms en-suite
- Half Board during the hike
- Detailed Walking Notes
- Map
- Pilgrim passport

Not Included

- Flights
- Insurance (recommended)
- Drinks
- Dinner first and last nights
- Flights from/to airport

prices & options

Period	Price (€)	Single Room (€)	
High Season April, May, June, September	510	121	
Mid Season July, August, October	460	104	
Low Season January, February, March, November, December	390	86	

Options

Transport To Ponferrada from Santiago (€pp)	Extra Nights Ponferrada, Sarria, Santiago		Picnic lunches
	2* Hotel B&B (€)	3* Hotel B&B (€)	

	Single	Double (pps)	Single	Double (pps)		
For info on transfers for more passengers or from other airports, please ask us .	60	44	98	65		(sandwich, fruit, chocolate bar)
2-8 people €100pp						€40
Special rates for groups of 6+						

[Top](#)