

French way / Camino Frances section 2


[▶ BOOK NOW!](#)

Walk From Pamplona to Logrono - 88km

6 Days/5 Nights



Half Board

hotels en-suite

year round

From €390

This Walking Holiday explores the second section of the Camino Frances / French Way, the most traditional of all the pilgrims' ways to Santiago de Compostela and the best known internationally.

Start your walk in Pamplona, famous for its Bull Run festival, and finish in Logrono at the heart of the Rioja wine region. Enjoy an attractive hike in hilly Navarra with its 12th-century castles, picturesque villages, and vineyards.

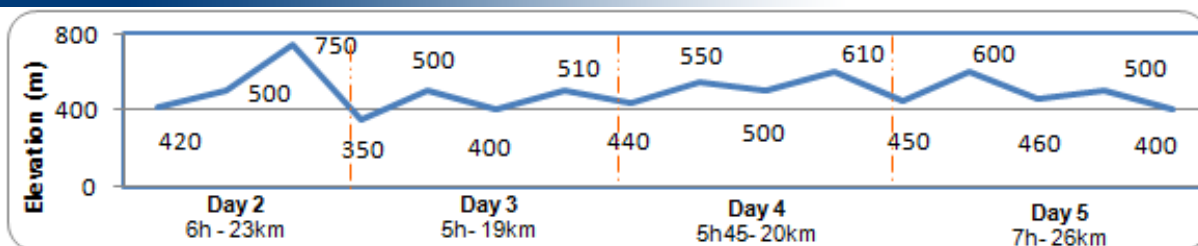
Everyday, during the walk, you are guaranteed a high level of comfort and gastronomy. The Camino is clearly marked with the "Scallop Shell" showing you the way. This walk can be physically demanding and requires a reasonable level of fitness. However, it's a highly rewarding walk that includes numerous cultural highlights.


[maps](#)

French Way in Yellow

Use the navigation tools on the left to zoom-in

Day By day



» **DAY 1 – To Pamplona**

You will be pre-booked in a traditional hotel in the heart of the town.



Town: ATM, Internet, shops, all facilities.

Accommodation: 3* hotel right in the historical centre in a renovated 16th-century house, en-suite.

» **DAY 2 – Pamplona to Puente de la Reina (6h15, 21.5km, +330m -480m)**

When leaving Pamplona behind, you are also leaving behind the Atlantic area of Navarra. From here onwards, the landscape will be dominated by cereal crops, Holm oaks and Mediterranean brushwood. The Pamplona basin is left behind too when you cross the "Alto del Perdon".



Town: ATM, Internet, shops, all facilities.

Accommodation: 2* hotel at the entrance of the village, en-suite.

Meal: Half Board

» **DAY 3 – Puente de la Reina to Estella (6h15, 21km, +260m -170m)**

The Camino to Estella is very uneven and quite agricultural. Small towns and villages are dotted amongst cereal fields, vineyards and olive trees.



Town: ATM, Internet, shops, all facilities.

Hotel: 2* Hotel in the center, en-suite.

Meal: Half Board

» **DAY 4 – Estella to Los Arcos (6h30, 21.5km, +220m -210m)**

Today you go through the Rioja area of Navarra. Enjoy the olive trees, cereal fields and, most importantly, the vineyards. From Villamayor do Monjardin to Los Arcos, you will cover 12km without coming across a single village.



Town: ATM, shops.

Accommodation: 2* hotel, en-suite.

Meal: Breakfast

» **DAY 5 – Los Arcos to Logrono (8h, 27km, +190m -240m)**

Today we leave Navarra and journey into Rioja. A pleasant hike into undulating countryside. On the route you will pass the stunning ruins of the Clavijo castle. Finally we come to the town of Logrono, strategically situated on the border between Alava and Navarra.



Town: ATM, Internet, shops, all facilities.

Accommodation: 3* hotel on the Camino and right in the historical centre!

Meal: Breakfast

NOTE: If you would like to walk at a more relaxed pace, we can split this walking day into 2 stages (17km & 10km), staying overnight in the village of Viana. Here you will be staying at a charming 2* hotel.

» **DAY 6 – Logrono, end of the walking holiday**

After breakfast we bid you farewell. Logrono is a city rich in history and traditions that have been preserved since the Middle Ages. The pilgrim's Camino to Santiago de Compostela made this one of the most important towns on the Camino.

how to get there

It is best to fly to Bilbao, Santander or Madrid. More info see: <http://www.spanish-airport-guide.com/>

To Spain

1 -Fly to Bilbao

A large amount of the passenger traffic at Bilbao Airport comes from internal flights and you can fly from Bilbao to any of the following Spanish Airports: A Coruna, Alicante, Barcelona, Badajoz, Fuerteventura, Gran Canaria, Jerez, Lanzarote, Madrid, Malaga, Palma de Mallorca, Santiago de Compostela, Seville, Tenerife, Valencia and Vigo.

There are also European flights to Brussels, Dusseldorf, Frankfurt, Lisbon, Milan, Munich, Paris and Stuttgart.

At the moment [easyJet](#), [Iberia](#) and [AerLingus](#) fly from the UK and Ireland to Bilbao. [easJjet](#) offer daily flights to Bilbao from London Stansted Airport, Iberia flies from Gatwick or Heathrow via Madrid and AerLingus operate out of Dublin.

2 - Fly to Santander

[Ryanair](#) are the only low-cost airline that currently offer direct flights to Santander. They offer flights from London Stansted and now Dublin, Frankfurt, Milan and Rome as well as Reus and Madrid in Spain.

[Iberia](#) offer a good selection of internal flights from Alicante, Barcelona, Gran Canaria, Malaga, Palma de Mallorca, Seville and Valencia.

3 - To Madrid

Virtually every company flies to Madrid

Spanish national company: www.iberia.com

Spanish low-cost: www.spanair.com

To start your walking holiday: Pamplona

1 - From Bilbao: direct bus to Pamplona (takes 2hrs) with Burundesa bus company, 10 departures a day.

2 - From Santander: direct bus to Pamplona (takes 2hrs) with Burundesa bus company, 2 departures a day.

3 - From Madrid: bus to Pamplona with Conda bus company, 10 departures a day. There is also a train from Madrid train station to Pamplona train station. 9 departures a day.

Back home, from Logrono

1 - To Bilbao

Train takes 1h30

Bus from bus station to Bilbao bus station 2h (week: 7.30, 9.30, 11.00, 15.00, 17.30, 19.30, weekend: 8.30, 11.00, 17.30, 19.30)

2 - To Santander

Train takes 2h30

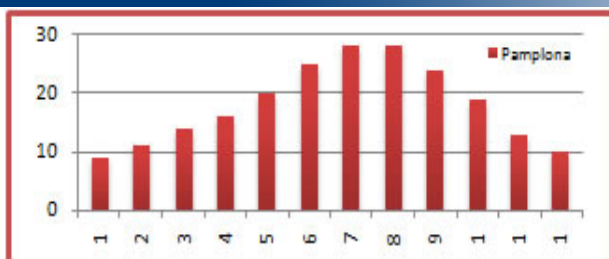
Bus 9.30 and 15.00

3 - To Madrid

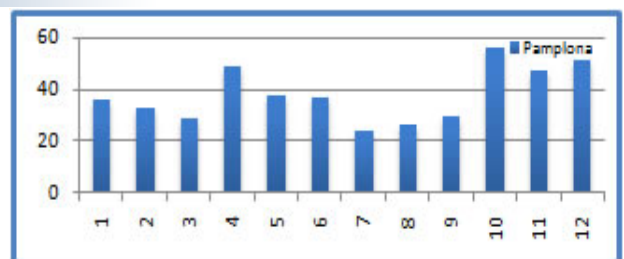
Train takes 3hrs

Spanish train timetables: <http://horarios.renfe.es/hir/ingles.html>

WEATHER



Average temperatures



Average rainfall

about the walking holiday

hotels

These hotels and guesthouses have been carefully selected for their comfort, location, friendliness and character, and are subject to availability. If the hotel described is not available we provide an alternative with the same standard of comfort & price.

Luggage

We will transport your luggage from one hotel to the next. You only need to carry your backpack during the day!

Included

- Luggage transferred from hotel to hotel
- Rooms en-suite
- Half Board during the hike
- Detailed Walking Notes
- Map
- Pilgrim passport

Not Included

- Flights
- Insurance (recommended)
- Drinks
- Dinner on first and last nights
- Transfer from/to airport

prices & options

Period	Price (€)	Single Room (€)	Split Day		Please note:
			Single room	Double room (pps)	
High Season April, May, June, September	510	121	116	95	<p>If you would like to stay in Pamplona during the Fiesta de San Fermin (6-14th July) an additional fee of €80 per person will apply.</p> <p>If you would like to stay in Logrono during the September Wine Fair, an additional fee of €30 per person will apply.</p>
Mid Season July, August, October	460	104	106	90	
Low Season January, February, March, November, December	390	86	106	90	

If you plan to walk Section 1 or Section 2 of the Camino Frances and intend to be in Pamplona or Puente de la Reina between the 5th and 14th of July, there is an extra €50pps per night spent between these 2 dates in one of these 2 locations. This is because of the San Fermin Feria in Pamplona http://en.wikipedia.org/wiki/San_Ferm%C3%ADn. All hotels double their prices and rooms must be booked at least a year in advance if you wish to be in Pamplona or Puente de la Reina on these dates

Options

	Extra Nights Pamplona, Logrono, Santander & Bilbao	Transport from Bilbao to Pamplona (€pp)	

	2* Hotel B&B (€)		3* Hotel B&B (€)		For info on transfers for more passengers or from other airports, please ask us .	Picnic lunches
	Single	Double (pps)	Single	Double (pps)		
	60	44	95	65	2-8 people €85pp	(sandwich, fruit, chocolate bar) €40
Special rates for groups of 6+						

[Top](#)