

French way / Camino Frances Section 1



Walk From St-Jean-Pied-de-Port to Pamplona - 68km

[▶ BOOK NOW!](#)

5 Days/4 nights



half Board

en-suite

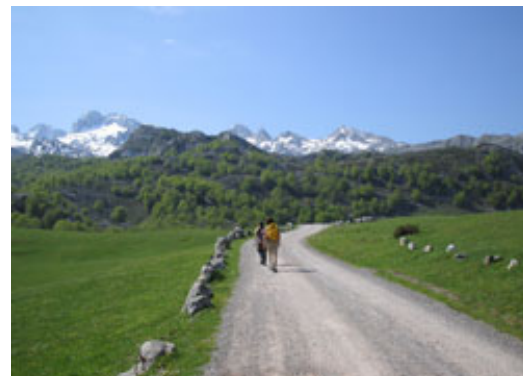
available year round

From €320

The Camino Frances / French Way is the most traditional of all the pilgrims' ways to Santiago de Compostela and the best known internationally.

This Walking Holiday explores the 1st section of the Camino Frances / French Way. It starts in France at St-Jean-Pied-de-Port and finishes in Pamplona, the town famous for its Bull Run festival. At first it follows the 'Route Napoleon' over the Roncevalles Pass (1500m), and then crosses the Basque country onto more gentle terrain.

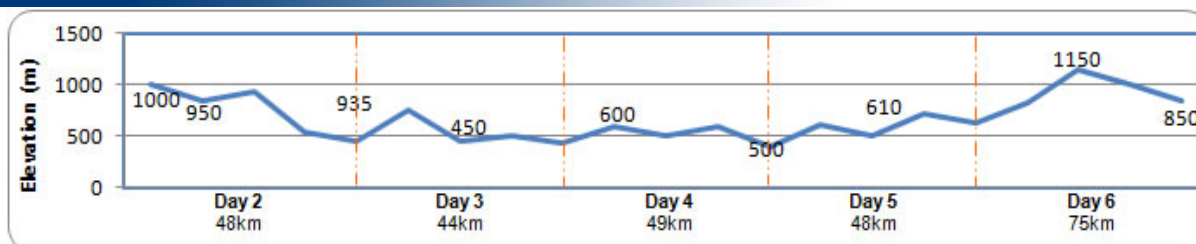
Everyday, during the walk, you are guaranteed a high level of comfort and gastronomy. The Camino is clearly marked with the "Scallop Shell" showing you the way. This walk can be physically demanding and requires a reasonable level of fitness. However, it's a highly rewarding walk that includes numerous cultural highlights.


[maps](#)

French Way in Yellow

Use the navigation tools on the left to zoom-in

Day By day



» Day 1 - To Saint-Jean-Pied-de-Port

You will be booked in a hotel in the heart of the small town. The rooms are en-suite.

Town: ATM, shops, all facilities.
Accommodation: Charming 2* Logis de France hotel in the centre of the town, en suite. Patrick, the owner, is also the cook... and a very good one at that!

Day 2 - Saint-Jean-Pied-de-Port To Roncevalles (8h30, 26km, +1250m -540m).

This first day is considered the most difficult as the Camino crosses the Pyrenees. The "Camino

» DAY 3 – Roncevalles to Zubiri (7h, 22km, +90m -550m)

The Camino crosses two beautiful mountain passes and continues on through beech and oak woods and meadows before coming to Espinal, where the panoramic views of the countryside with the Pyrenees in the background are a sight to behold. The river Arga runs alongside this part of the Camino and continues its course all the way to Larrasoana.



Town: ATM, Shops.
Accommodation: Renovated 2* hotel; comfortable, family-run and very friendly! En-suite.
Meal: Half Board

Napoleon" kicks off with a steep climb, on through orchards and past country houses and then, later, through Alpine style meadows, before weaving its way alongside leafy beech woods towards the border and the descent into Roncesvalles. The Valcarlos Camino mainly follows the road which runs through the valley alongside the river Nive or river Valcarlos. Don't miss the "Collegiate Church" in Roncesvalles.

NOTE: If you would like to walk at a more relaxed pace, we can split this walking day into 2 stages (12km & 14km), staying overnight in the village of Valcarlos. Here you will be staying a charming 2* hotel. We recommend taking this route during the winter months when snow can make the higher route impassable.



Town: ATM, shops.
Accommodation: 2* hotel within a fully renovated 15th-century monastery, en-suite
Meal: Half Board

» DAY 4 – Zubiri to Pamplona (6h, 20km, +/- 250m)

The Camino runs along the river Arga, at the foot of a group of hills covered in beech, oak and Scots pine. As we approach Pamplona, the landscape shows the obvious influence of civilisation; with its conifers, reforestation and farmlands.



Town: ATM, shops, all facilities.
Accommodation: 3* hotel; a renovated 16th-century house in the historic center of the town, en-suite.
Meal: Breakfast

» DAY 5 – Pamplona, end of the walking holiday

After breakfast we bid you farewell.



Meal: Breakfast

how to get there

It is best to fly to France (Biarritz or Paris), then come back from Spain (Bilbao, Santander or Madrid)

1 - To France

- **Biarritz**
 Ryanair, easyJet, Air France (via Orly)
 Biarritz airport info: <http://www.biarritz.aeroport.fr/>
- **Paris**
 Virtually all companies fly to paris

2 - Flying back home from Spain

- From Bilbao
 A large amount of the passenger traffic at Bilbao Airport comes from internal flights and you can fly from Bilbao to any of the following Spanish Airports: A Coruna, Alicante, Barcelona, Badajoz, Fuerteventura, Gran Canaria, Jerez, Lanzarote, Madrid, Malaga, Palma de Mallorca, Santiago de Compostela, Seville, Tenerife, Valencia and Vigo.
 There are also European flights to Brussels, Dusseldorf, Frankfurt, Lisbon, Milan, Munich, Paris and Stuttgart.
 At the moment, [easyJet](#), [Iberia](#) and [AerLingus](#) fly from the UK and Ireland to Bilbao. [easyJet](#) offer daily flights to Bilbao from London Stansted Airport, Iberia flies from Gatwick or Heathrow via Madrid and AerLingus operate out of Dublin.
- From Santander
[Ryanair](#) are the only low-cost airline that currently offer direct flights to Santander. They offer flights from London Stansted and now Dublin, Frankfurt, Milan and Rome, as well as Reus and Madrid in Spain.

[Iberia](#) offer a good selection of internal flights from Alicante, Barcelona, Gran Canaria, Malaga, Palma de Mallorca, Seville and Valencia.

For more info see: <http://www.spanish-airport-guide.com/>

To the beginning of your walking holiday: St-Jean-Pied-de-Port

From Biarritz (2h)

1 - Shuttle bus to Bayonne train station

Bayonne-Anglet-Biarritz Airport is located just 3 Km from Biarritz. However it is a much better option to go to Bayonne train station (not Biarritz). Take the STAB line 6 to Bayonne train station (direct). The journey takes approx. 20 minutes and will cost €1.20. See <http://www.bus-stab.com>. The bus stop is in front of the terminal.

Alternatively, there is a taxi rank in front of the terminal; cost is €25-€30.

2 - Train to St-Jean-Pied-de-Port

There are direct trains from Bayonne to Saint Jean Pied de Port at 18h13 (1h22 travel). See <http://www.voyages-sncf.com/leisure/fr/launch/home/>

From Paris (6h30)

Take a train to St-Jean-Pied-de-Port
Departs every day at 12:10, arrives at 18:30

Back Home, from Pamplona

1 - The Burundesa bus company links Pamplona with **Bilbao** (2h) with 10 departures a day. It is possible to fly from there with Aerlingus.

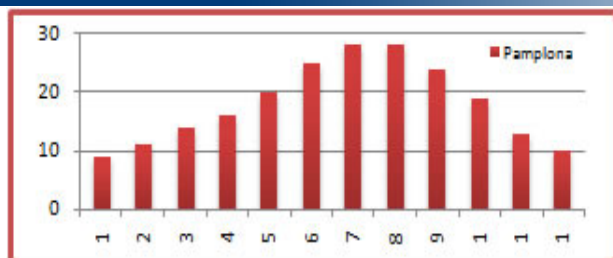
See: <http://horarios.renfe.es/hir/ingles.html>

2 - The Burundesa bus company links Pamplona with **Santander** (2h) with 2 departures a day. From the bus station in Santander, simply get a direct city bus to the airport (20min), and Ryanair operates flights from there.

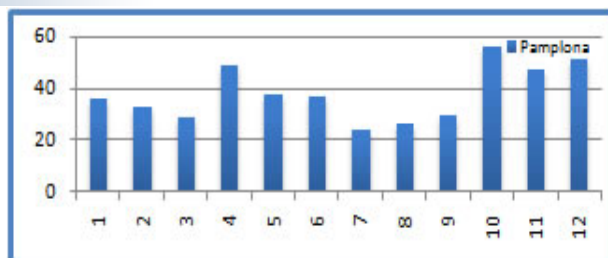
See: <http://horarios.renfe.es/hir/ingles.html>

Spanish airport info: <http://www.spanish-airport-guide.com/>

WEATHER



Average temperatures



Average rainfall

about the walking holiday

hotels

These hotels and guesthouses have been carefully selected for their comfort, location, friendliness and character, and are subject to availability. If the hotel described is not available we provide an alternative with the same standard of comfort & price.

Luggage

We will transport your luggage from one hotel to the next. You only need to carry your backpack during the day!

Included	Not Included
<ul style="list-style-type: none"> • Luggage transferred from hotel to hotel • Rooms en-suite • Half Board during the hike • Detailed Walking Notes • Map • Pilgrim passport 	<ul style="list-style-type: none"> • Flights • Insurance (recommended) • Drinks • Dinner first and last nights • Transfer from/to airport

prices & Options

Period	Price (€)	Single Room (€)	Split Day 2		Please note: If you would like to stay in Pamplona during the Fiesta de San Fermin (6-14th July) an, additional fee of €80 per person will apply.
			Single room	Double room (pps)	
High Season April, May, June, September	420	103	116	95	
Mid Season July, August, October	380	88	106	90	
Low Season January, February, March, November, December	320	73	106	90	

If you plan to walk Section 1 or Section 2 of the Camino Frances and intend to be in Pamplona or Puente de la Reina between the 5th and 14th of July, there is an extra €50pps per night spent between these 2 dates in one of these 2 locations. This is because of the San Fermin Feria in Pamplona http://en.wikipedia.org/wiki/San_Fermin_Feria. All hotels double their prices and rooms must be booked at least a year in advance if you wish to be in Pamplona or Puente de la Reina on these dates

Options

	Extra Nights St Jean, Pamplona, Santander & Bilbao (€)				Picnic lunches	Transport To St Jean From Biarritz airport or Hendaya- 1h (€pp) For info on transfers for more passengers or from other airports, please ask us .
	2*Hotel B&B (€)		3* Hotel B&B (€)			
	Single	Double (pps)	Single	Double (pps)		
	60	44	95	65	(sandwich, fruit, chocolate bar) €30	2-8 people €28pp
Special rates for groups of 6+						

[Top](#)